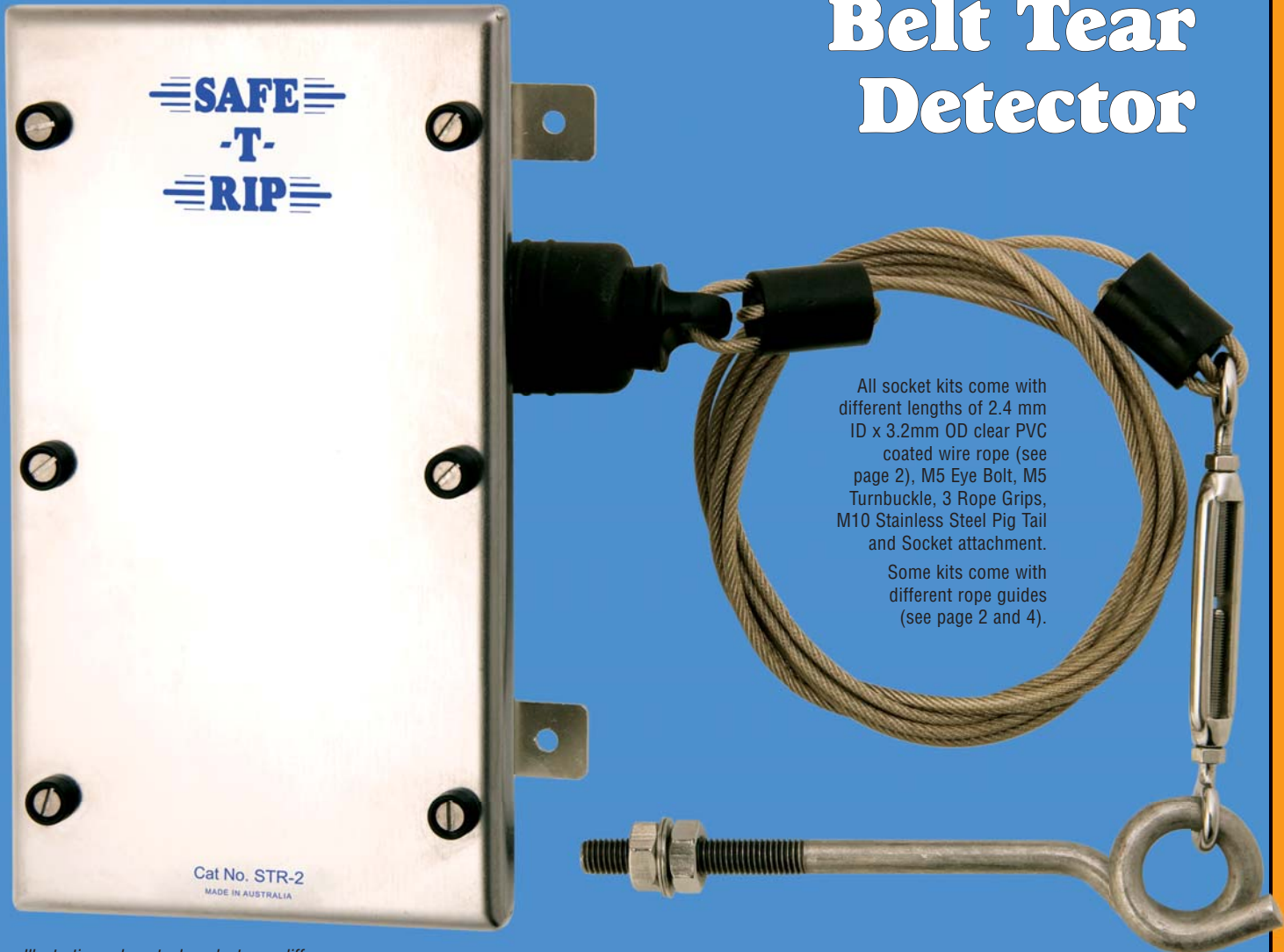


SAFE-T-RIP®

CE Conformity

Conveyor Belt Tear Detector



All socket kits come with different lengths of 2.4 mm ID x 3.2mm OD clear PVC coated wire rope (see page 2), M5 Eye Bolt, M5 Turnbuckle, 3 Rope Grips, M10 Stainless Steel Pig Tail and Socket attachment.

Some kits come with different rope guides (see page 2 and 4).

Illustration only, actual product may differ.

The **SAFE-T-RIP** heavy duty Belt Rip Detector is magnetically or mechanically operated, utilising the inherent reliability of Reed Switches or Micro Switches. The Reed Switches are encapsulated in a robust, non metallic enclosure.

Various trip tensions can be achieved by simple external adjustment.

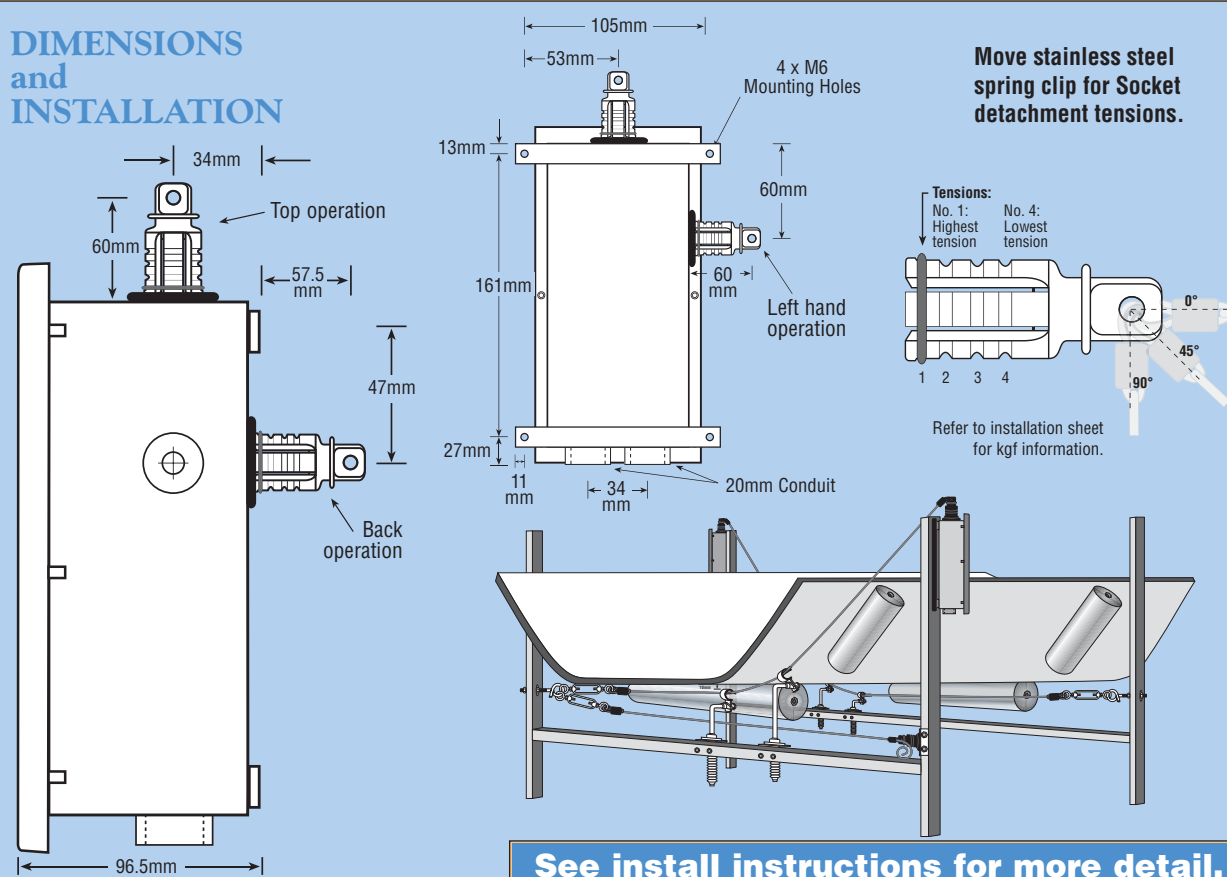
An external santoprene rubber boot assists in excluding dust and dirt from the plug and magnetic socket assembly.

FEATURES

- 316 2mm electro polished stainless steel enclosure to IP67.
- All external fixings etc. are 316 Stainless Steel.
- Dust boot on socket assembly.
- Socket can be mounted on either side, top or rear of enclosure. (as per Cat No.)
- Two 20mm conduit entries.
- Switches pre-wired to terminals.
- Screw cup fittings for lid, to prevent screwdriver slip.

CONVEYOR BELT TEAR DETECTOR

DIMENSIONS and INSTALLATION



See install instructions for more detail.

Socket Positions

| | Add to CAT No. | | Add to CAT No. |
|----------------------|----------------|--------------------|----------------|
| Right hand operation | -RH | Back operation | -BK |
| Left hand operation | -LH | Top end operation | -TP |
| | | Example: STR-SSB-1 | -RH |

Enclosure Specifications

- High Impact PBT/PC Non Corrosive Material
- UV Stable (See Valox Specs Sheet)
- Flame Retardent ASTM:UL94-V0 (1.6mm) Resist Splash and Spillage of Most Hydrocarbon Solvents, Mild Acids and Strong Alkali. (See Valox Specs Sheet)

Variations

| | Add to CAT No. |
|---|----------------|
| Stainless steel armoured cable entry glands 2 x M20 | -ACGS |
| Tunnel rail mount terminals | -K |

Example: STR-SSB-1-RH -K

STR-SOCH Socket Kit with 3m PVC coated wire rope, including 1m tether wire with M5 Eye Bolt, M5 Turnbuckle and 3 x Rope Grips, M10 Pig Tail and STR-H200-SS

STR-SOCHS Socket Kit with 3m PVC coated wire rope, including 1m tether wire with M5 Eye Bolt, M5 Turnbuckle and 3 x Rope Grips, M10 Pig Tail and STR-HS200-SS

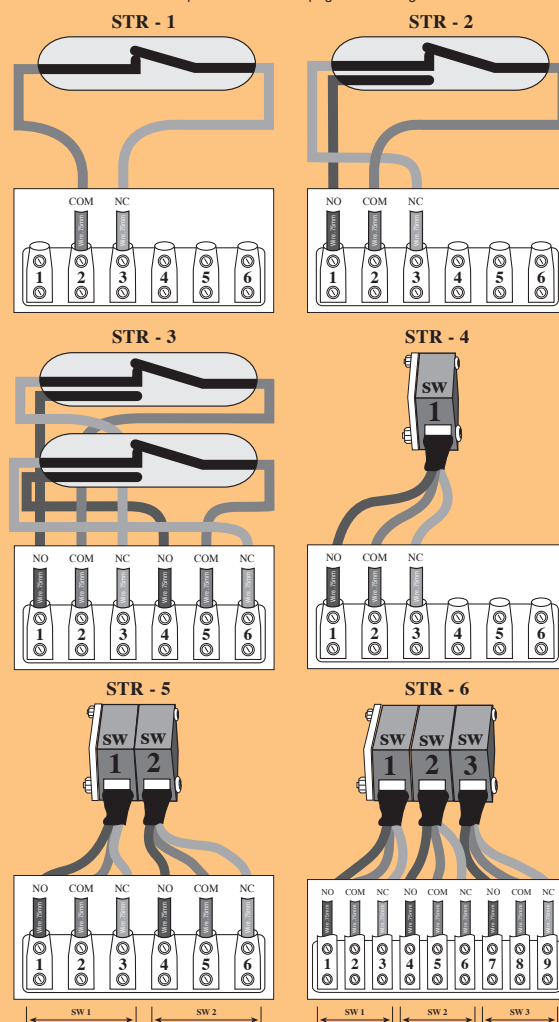
STR-SOCCG Socket Kit with 3m PVC coated wire rope, including 1m tether wire with M5 Eye Bolt, M5 Turnbuckle and 3 x Rope Grips, M10 Pig Tail and STR-G200-SS

STR-SOCGS Socket Kit with 3m PVC coated wire rope, including 1m tether wire with M5 Eye Bolt, M5 Turnbuckle and 3 x Rope Grips, M10 Pig Tail and STR-GS200-SS

STR-SOC Socket Kit with 3m PVC coated wire rope, including 1m tether wire with M5 Eye Bolt, M5 Turnbuckle and 3 x Rope Grips.

NOTE: Extra wire add -4 (4 m of wire plus 1 m tether) -5 (5 m of wire plus 1 m tether) up to -10

Switches shown with Socket attached
See "Important Notice" on page 3 for wiring rules



TECHNICAL SPECIFICATIONS

STR-1 Electrical Characteristics

| | | |
|----------------------------------|--------|------------------|
| Contact Form | | A |
| Contact Material | | Ru |
| Contact rating max | W / VA | 10 |
| Switching voltage max | VDC | 200 |
| | VAC | 140 |
| Switching current max | A | 1 |
| Carrying current max | A | 1.2 |
| Breakdown voltage min | VDC | 240 |
| Contact resistance max (Initial) | mΩ | 100 |
| Insulation resistance min | Ω | 10 ¹⁰ |

Environmental Characteristics

| | | |
|------------------------|----|-------------|
| Operating temperature | °C | -60 to +155 |
| Vibration (50-2000 Hz) | g | 20 |
| Shock (1/2 sin 11 ms) | g | 100 |

STR-2 and STR-3 Electrical Characteristics

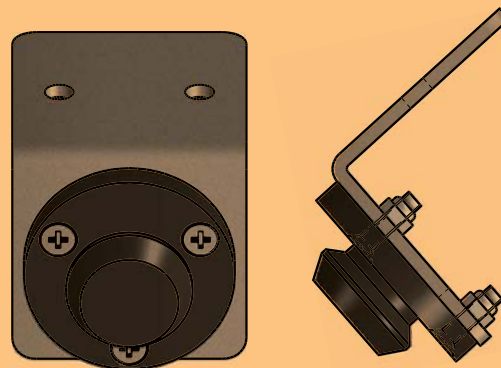
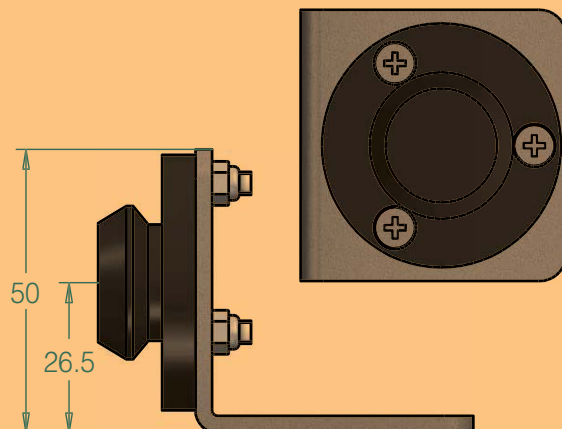
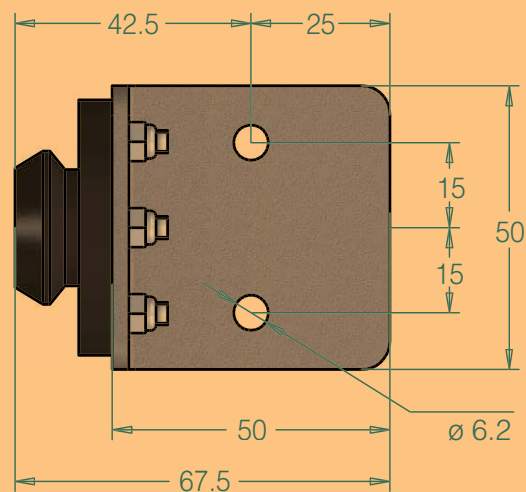
| | | |
|----------------------------------|--------|------------------|
| Contact Form | | C |
| Contact Material | | Rh |
| Contact rating max | W / VA | 5 |
| Switching voltage max | VDC | 175 |
| | VAC | 120 |
| Switching current max | A | 0.25 |
| Carrying current max | A | 1.5 |
| Breakdown voltage min | VDC | 200 |
| Contact resistance max (Initial) | mΩ | 100 |
| Insulation resistance min | Ω | 10 ¹⁰ |

Environmental Characteristics

| | | |
|------------------------|----|-------------|
| Operating temperature | °C | -40 to +125 |
| Vibration (50-2000 Hz) | g | 30 |
| Shock (1/2 sin 11 ms) | g | 50 |

Safety Micro Switch with Direct Opening Action Specifications

| | | |
|---------------------------------------|---------------------------------------|---|
| IEC 60947-5-1 Annex K classification | <input type="checkbox"/> Type 1 | <input checked="" type="checkbox"/> Type 2 Direct Opening |
| Change-over contact element | <input checked="" type="checkbox"/> C | <input type="checkbox"/> Za <input type="checkbox"/> Zb |
| Contact material | Ag-Ni | |
| Utilization category | AC-15 | DC-13 |
| Operational voltage | 230 V | 60 V DC |
| Operational current | 1,5 A | 0.5 Amp DC |
| Frequency | 50/60 Hz | — |
| Number of electrical cycles | 6050 (6 min-1) | |
| Number of mechanical cycles | 6050 (6 min-1) | |
| Conventional free air thermal current | 10 A | |
| Conventional enclosed thermal current | — | |
| Service Temperature | -30° C No Icing | +80° C |



Part No. STR-SOC-SS-SP

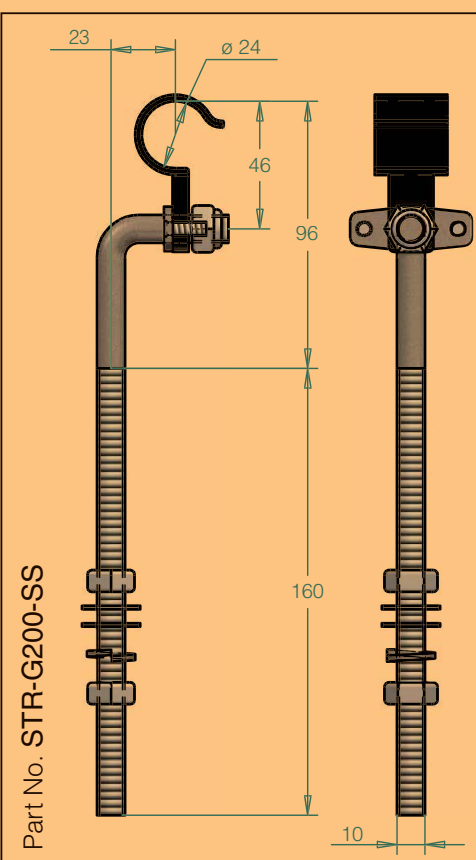
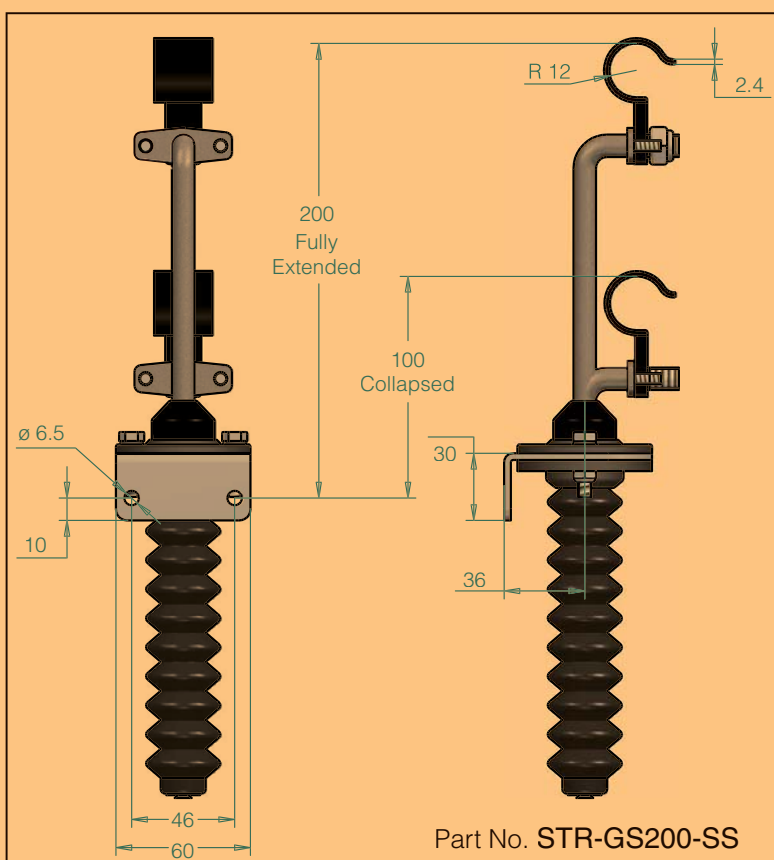
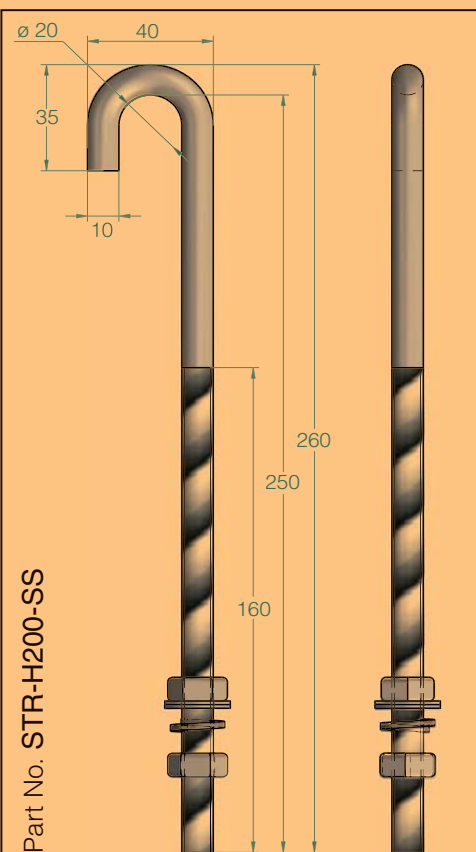
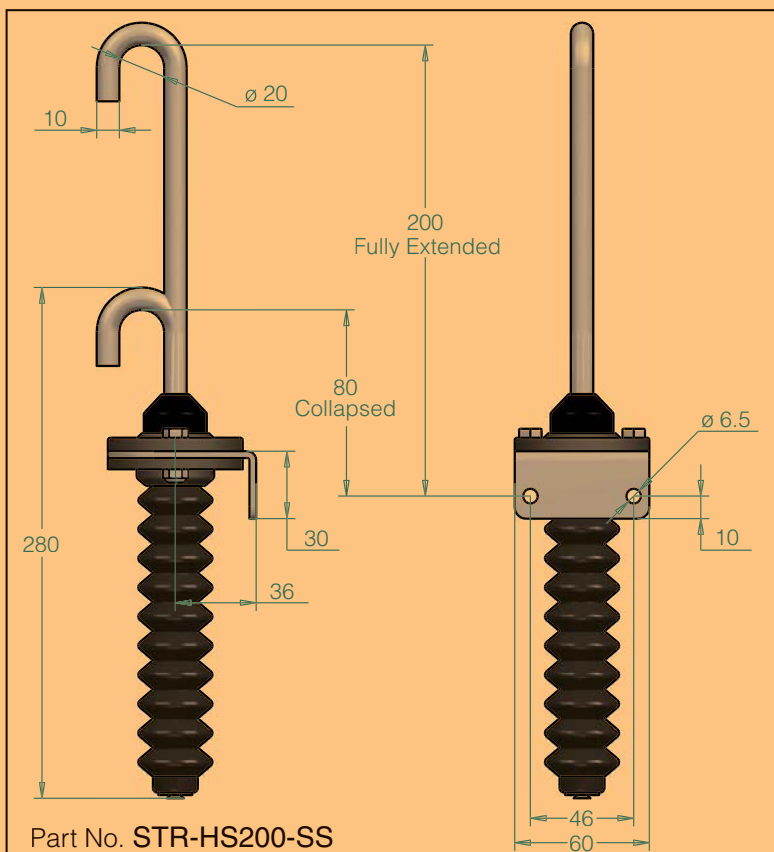
IMPORTANT NOTICE:

IEC 60947-5-1 2016
AS 60947-5-1 2015
Clause K.7.1.4.6.1
Form C or Form Za

Form C or Form Za direct opening action change over contact elements. Only one contact element (Make or Break) in each switch shall be used.

Specifications (short-circuit with standability)

| | | |
|---|---------------------------|---------------------------|
| Rated conditional short-circuit current | 3 00 A | 1 000 A |
| Short circuit protective device | Fuse 6 A gG (IEC 60269-2) | Fuse 6 A gR (IEC 60269-4) |



Manufactured in
Australia by:

18 Tambrey Way, Malaga
Western Australia 6090

Telephone: (08) 9247 6700

Facsimile: (08) 9248 6292

**Electric
Control**
PRODUCTS

www.safe-t-products.com.au

Sold by:

PUB No. STR DEL: CB003A 12/19

CONVEYOR BELT TEAR DETECTOR