



# Temperature Monitoring Switch



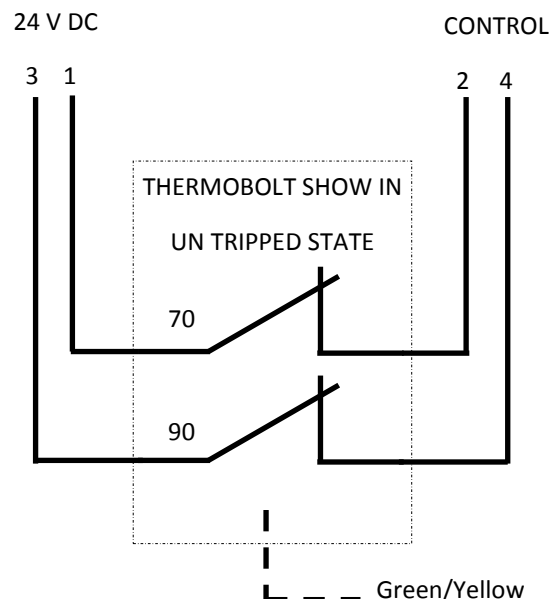
## Model ThermoBolt—LTB

Reliable \* Economical \* Robust

### FEATURES & BENIFITS



- Economical temperature monitoring for housings, electric motors and conveyor bearings blocks
- Two switches—70 deg C & 90 deg C. (others combinations available)
- Built to suit existing housing threads—most sizes available from M6—M24 & Imperial
- Stainless steel body with flexible stainless steel cable protection for 1m
- All metal parts are bonded to earth core
- 3m Oil & Chemical resistant PVC cable
- 24V AC/DC—1A Resistive—Passive Device





## ThermoBolt Switch—Temperature Monitoring Switch



**Model:**  
**LEVELTEC**  
**THERMOBOLT SWITCH**  
**LTB70903-01**

**Part No.**  
**LEV-LTB010**

### Accessories (to be ordered separately)

#### Non Silicone Heat Transfer Compound

Apply between ThermoBolt & Housing  
when installing for best results

#### Part No.—Heat Transfer Kit

HTC-0010



*Simply contact Leveltec to obtain the product that suits you...!!*

Note: all information is subject to change & images are for illustration purposes only

**Leveltec Engineering Pty Ltd**

**Gloucester** P: +61 2 6558 9264 F: + 61 2 6558 1002

**Sydney** P: +61 2 9299 5630 F: + 61 2 6558 1002

**NZ Office** P: +64 4 896 6285 F: +64 4 896 6271

E: [sales@leveltec.com.au](mailto:sales@leveltec.com.au)

website: [www.leveltec.com.au](http://www.leveltec.com.au)