

SAFE-T-RIP®

CE Conformity

Conveyor Belt Tear Detector



All socket kits come with different lengths of 2.4 mm ID x 3.2 mm OD clear PVC coated wire rope (see page 2), M5 Eye Bolt, M5 Turnbuckle, 3 Rope Grips, M10 Stainless Steel Pig Tail and Socket attachment.

Some kits come with different rope guides (see page 2 and 4).

Illustration only, actual product may differ.

The **SAFE-T-RIP** heavy duty Belt Rip Detector is magnetically or mechanically operated, utilising the inherent reliability of Reed Switches or Micro Switches. The Reed Switches are encapsulated in a robust, non metallic enclosure.

Various trip tensions can be achieved by simple external adjustment.

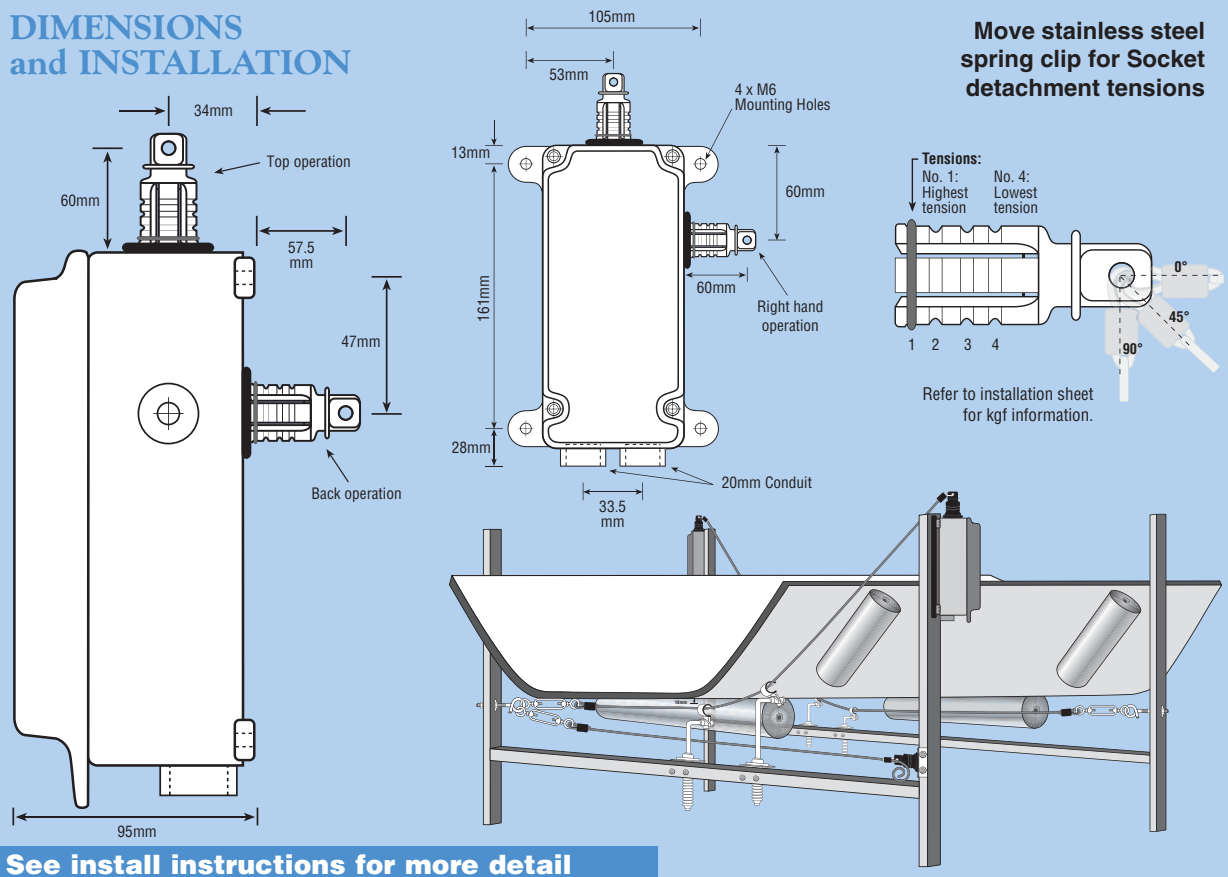
An external santoprene rubber boot assists in excluding dust and dirt from the plug and magnetic socket assembly.

FEATURES

- UV stable, flame retardant (V0 rated) PBT/PC non corrosive enclosure to IP67.
- All external fixings etc. are 316 Stainless Steel.
- Dust boot on socket assembly.
- Socket can be mounted on either side, top or rear of enclosure. (as per Cat No.)
- Two x 20mm stainless steel armoured cable glands available.
- Two 20mm conduit entries.
- Label attachment lug on lid.
- Switches pre-wired to terminals.

CONVEYOR BELT TEAR DETECTOR

DIMENSIONS and INSTALLATION



See install instructions for more detail

Socket Positions

	Add to CAT No.		Add to CAT No.
Right hand operation	-RH	Back operation	-BK
Left hand operation	-LH	Top end operation	-TP
		Example: STR-P-1	-RH

Enclosure Specifications

- High Impact PBT/PC Non Corrosive Material
- UV Stable (See Valox Specs Sheet)
- Flame Retardent ASTM:UL94-V0 (1.6mm) Resist Splash and Spillage of Most Hydrocarbon Solvents, Mild Acids and Strong Alkali. (See Valox Specs Sheet)

Variations

Stainless steel armoured cable entry glands 2 x M20 -ACGS
Tunnel rail mount terminals -K

Example: STR-P-1-RH -K

STR-SOCH Socket Kit with 4m PVC coated wire rope, including 1m tether wire with M5 Eye Bolt, M5 Turnbuckle and 3 x Rope Grips, M10 Pig Tail and STR-H200-SS

STR-SOCHS Socket Kit with 4m PVC coated wire rope, including 1m tether wire with M5 Eye Bolt, M5 Turnbuckle and 3 x Rope Grips, M10 Pig Tail and STR-HS200-SS

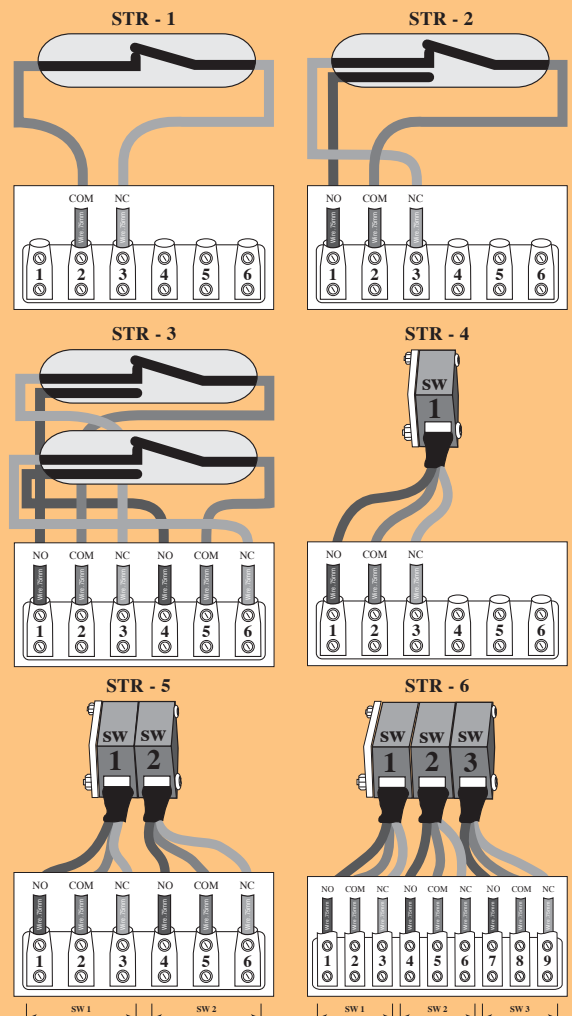
STR-SOCG Socket Kit with 4m PVC coated wire rope, including 1m tether wire with M5 Eye Bolt, M5 Turnbuckle and 3 x Rope Grips, M10 Pig Tail and STR-G200-SS

STR-SOCGS Socket Kit with 4m PVC coated wire rope, including 1m tether wire with M5 Eye Bolt, M5 Turnbuckle and 3 x Rope Grips, M10 Pig Tail and STR-GS200-SS

STR-SOC Socket Kit with 4m PVC coated wire rope, including 1m tether wire with M5 Eye Bolt, M5 Turnbuckle and 3 x Rope Grips.

NOTE: Extra wire add -4 (4m of wire plus 1m tether) -5 (5m of wire plus 1m tether) up to -10

Switches shown with Socket attached
See "Important Notice" on page 3 for wiring rules



TECHNICAL SPECIFICATIONS

STR-1 Electrical Characteristics

Contact Form		A
Contact Material		Ru
Contact rating max	W / VA	10
Switching voltage max	VDC	200
	VAC	140
Switching current max	A	1
Carrying current max	A	1.2
Breakdown voltage min	VDC	240
Contact resistance max (Initial)	mΩ	100
Insulation resistance min	Ω	10 ¹⁰

Environmental Characteristics

Operating temperature	°C	-60 to +155
Vibration (50-2000 Hz)	g	20
Shock (1/2 sin 11 ms)	g	100

STR-2 and STR-3 Electrical Characteristics

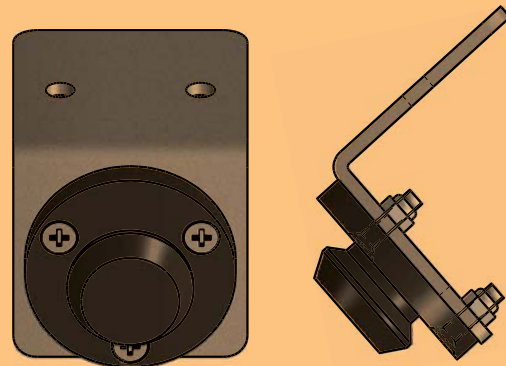
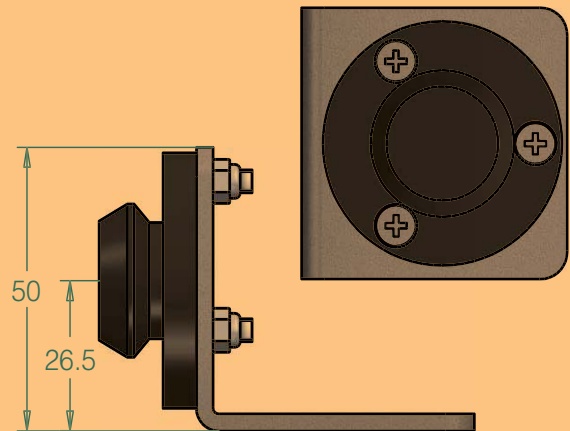
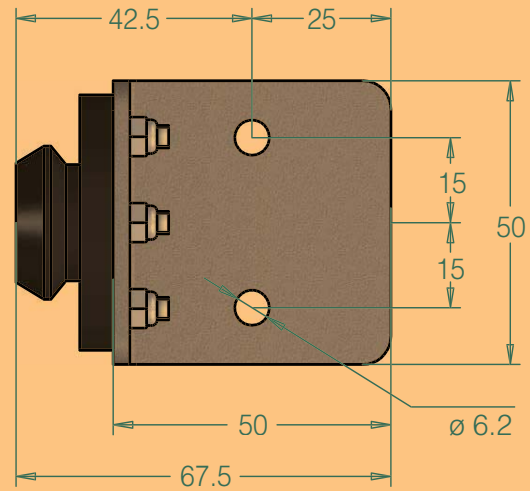
Contact Form		C
Contact Material		Rh
Contact rating max	W / VA	5
Switching voltage max	VDC	175
	VAC	120
Switching current max	A	0.25
Carrying current max	A	1.5
Breakdown voltage min	VDC	200
Contact resistance max (Initial)	mΩ	100
Insulation resistance min	Ω	10 ¹⁰

Environmental Characteristics

Operating temperature	°C	-40 to +125
Vibration (50-2000 Hz)	g	30
Shock (1/2 sin 11 ms)	g	50

Safety Micro Switch with Direct Opening Action Specifications

IEC 60947-5-1 Annex K classification	<input type="checkbox"/> Type 1	<input checked="" type="checkbox"/> Type 2 Direct Opening
Change-over contact element	<input checked="" type="checkbox"/> C	<input type="checkbox"/> Za <input type="checkbox"/> Zb
Contact material	Ag-Ni	
Utilization category	AC-15	DC-13
Operational voltage	230 V	60 V DC
Operational current	1.5 A	0.5 Amp DC
Frequency	50/60 Hz	—
Number of electrical cycles	6050 (6 min ⁻¹)	
Number of mechanical cycles	6050 (6 min ⁻¹)	
Conventional free air thermal current	10 A	
Conventional enclosed thermal current	—	
Service Temperature	-30° C No Icing	+80° C



Part No. STR-SOC-SS-SP

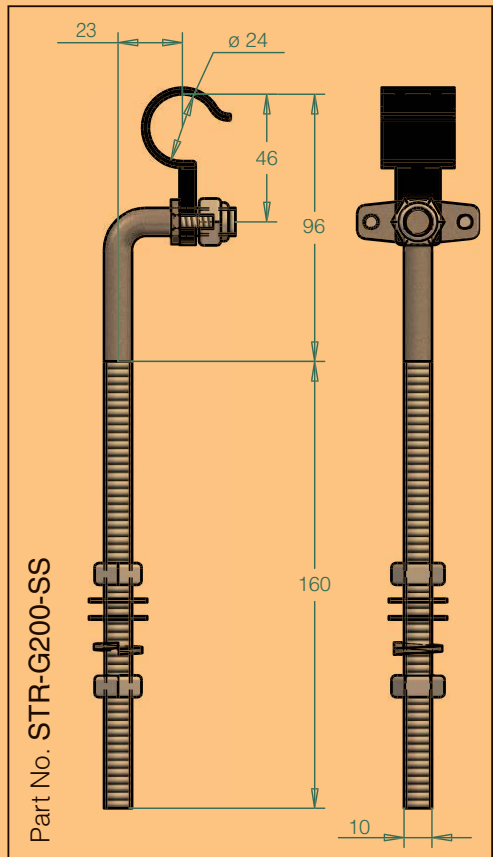
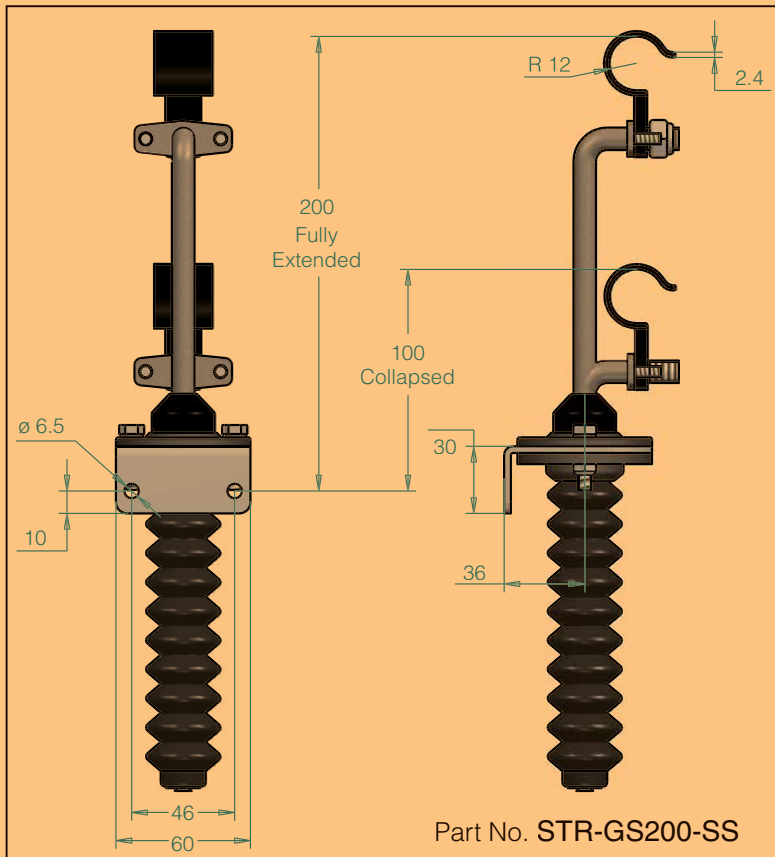
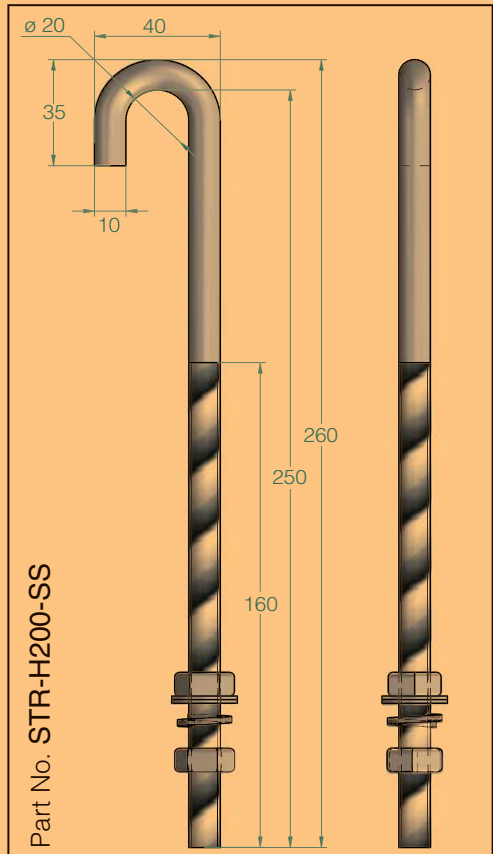
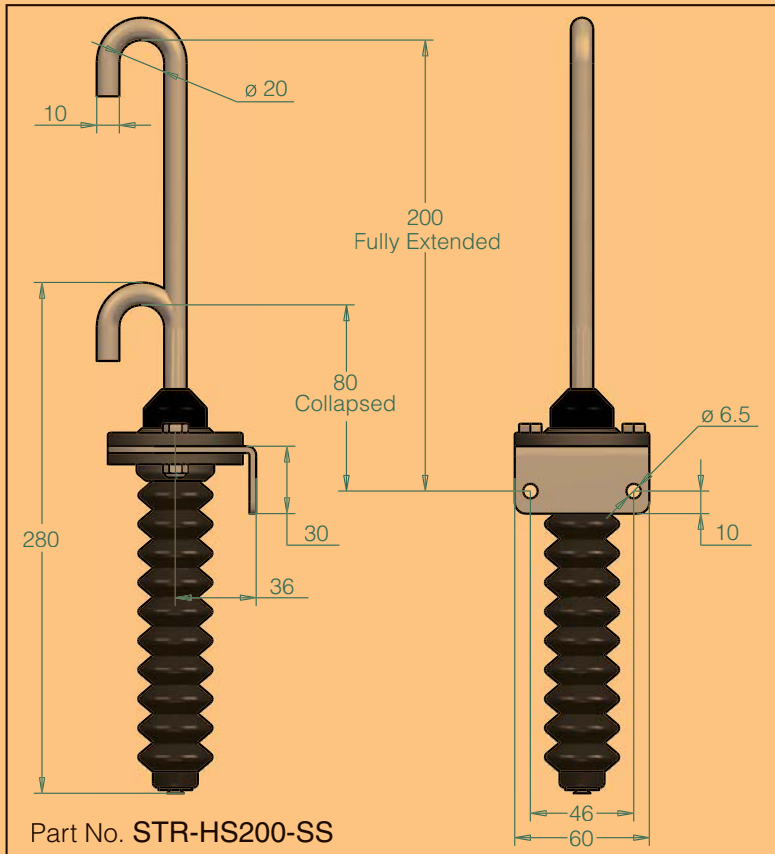
IMPORTANT NOTICE:

IEC 60947-5-1 2016
AS 60947-5-1 2015
Clause K.7.1.4.6.1
Form C or Form Za

Form C or Form Za change over contact elements.
Only one contact element (Make or Break) in each switch shall be used.

Specifications (short-circuit with standability)

Rated conditional short-circuit current	3 00 A	1 000 A
Short circuit protective device	Fuse 6 A gG (IEC 60269-2)	Fuse 6 A gR (IEC 60269-4)



Manufactured in Australia by:

18 Tambrey Way, Malaga
Western Australia 6090

Telephone: (08) 9247 6700

Facsimile: (08) 9248 6292

Electric Control
PRODUCTS

www.safe-t-products.com.au

Sold by:

PUB No. STR DEL: 08003 12/20

CONVEYOR BELT TEAR DETECTOR