

# LABEL PRINTERS

BMP21-PLUS PORTABLE LABEL PRINTER

119

BMP61 PORTABLE LABEL PRINTER

120

BMP71 PORTABLE LABEL PRINTER

123

SOFTWARE

126



 **BRADY**<sup>®</sup>  
WHEN PERFORMANCE MATTERS MOST™



# BRADY PRINTERS



## BMP®21-PLUS Portable Label Printer

- Perfect for organising your office, labelling electrical wires or datacomm cables
- Drop, Lock & Go™ Smart Cartridges - ribbon and label in one
- Large backlit display screen
- Barcodes, serialisation and 104 symbols for electrical, safety and datacomm
- Print on materials up to 19.05mm wide
- Optional rechargeable Li-Ion battery

PART NO.	DESCRIPTION
139535	BMP®21-PLUS Label printer
139540	Li-Ion Battery
139542	Hardcase
110891	Magnet
110892	Multifunction Tool (Magnet, Flashlight, Pole Strap, Stand and Belt Loop)
110937	AC Adapter
875407	Li-Ion Battery & AC Adapter



**BMP®21-PLUS**  
LABEL PRINTER

## Self-Laminating Vinyl (B-427)

- UL recognised and RoHs compliant
- Ideal for marking data and electrical cables
- Self extinguishing material
- Temperature range -40°C to +70°C

PART NO.	COLOUR	SIZE
110927	Black On White	19.05mm x 4.27m
110928	Black On White	25.4mm x 4.27m
110929	Black On White	30.48mm x 4.27m
110930	Black On White	38.1mm x 4.27m



## Nylon Cloth (B-499)

- UL Recognised and RoHS Compliant
- Ideal for wire and cable, patch panels, terminal blocks, face plates and general identification
- Ideal for environments where heat, cold, oil and dirt are present
- Temperature range -40°C to +90°C

PART NO.	COLOUR	SIZE
110893	Black On White	9.53mm x 4.88m
110894	Black On White	12.7mm x 4.88m
110895	Black On White	19.05mm x 4.88m
110938	Black On White – For Terminal Blocks	9.53mm x 4.88m
110939	Black On White – For Terminal Blocks	12.7mm x 4.88m



## BMP®61-Portable Label Printer

- Large, Intuitive Colour Touch-Screen Display
- Fast Print Speed 33.8mm/sec
- Crisp Print with 300 dpi Printhead
- Auto Label Formatting with Smart-Cell Technology
- Die-Cut, Continuous & Custom Label Supplies Up to 51mm
- Industrial, Drop Tested Rugged Design
- Data Connectivity via USB and WiFi
- Compatible with Brady Workstation software. Go to [Workstation.BradyID.com](http://Workstation.BradyID.com) for further details

PART NO.	DESCRIPTION
877863	BMP61 Label Printer with WiFi
146220	Hardcase
146233	Carrying Strap
146221	Magnet Accessory
876185	External Battery Quick Charger
133255	Rechargeable NiHM Battery
146228	Battery Cover
146222	Cutter Accessory
18556	Cleaning Kit 5-Pack

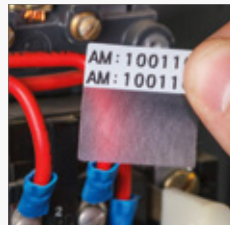
Printer ships with Nickel Battery Pack, MC1-1000-595-WT-BK cartridge, USB Cable, AC Adapter Product CD, Brady Printer Drivers CD and Quick Start Guide.



**BMP®61**  
LABEL PRINTER



Durasleeve Inserts



Self-Laminating Labels



Heat Shrink Wire Markers



Asset Tracking Labels



Safety Labels

**Almost all of the TLS2200's labels will work in the BMP®61 printer! For further assistance, please contact our Customer Service Team on 1800 777 458.**

## Printer Ribbons

All materials in the printer will work with a new series of M61 ribbons that easily fit into the printer.

PART NO.	REFERENCE	COLOUR	DESCRIPTION	SIZE
148134	M61-R6610	Black	R6600 Series Ribbon	50.8mm x 22.85m
148129	M61-R4310	Black	R4300 Series Ribbon	50.8mm x 22.85m





## Durasleeve® Wire Marking (B-390) - (also for TLS2200)

Brady's most popular wire & cable marking solution. Durasleeve® markers create a durable legend. This solution consists of two components: a transparent PVC (carrier) with a label pocket and a polypropylene insert (designed to be printed on) to slide into this pocket.

- Long lasting and durable marking of wires and cables
- Legend is at all times protected by the tube and can easily be replaced
- Available in white, 15mm or 30mm length

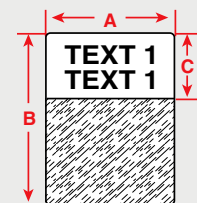
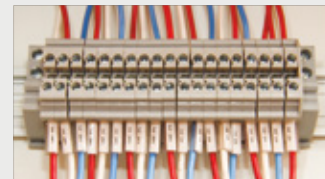
PART NO.	QTY/ROLL	SIZE	COLOUR	MAX LINES OF PRINT	REC. RIBBON
<b>B-390 Polypropylene Wire Marking Inserts</b>					
18684	300	15 x 3.93mm Insert	White	1	M61-R6610
18685	300	30 x 3.93mm Insert	White	1	M61-R6610
19305	3,000	15 x 3.93mm Insert	White	1	M61-R6610
19306	3,000	30 x 3.93mm Insert	White	1	M61-R6610

PART NO.	QTY/ROLL	SIZE
<b>Durasleeve Wire Marking Carriers</b>		
13255	1,000	15mm - Fits Wire O.D 1.3-3.0mm
13256	1,000	15mm - Fits Wire O.D 2.5-5.0mm
13262	500	30mm - Fits Wire O.D 1.3-3.0mm
13263	500	30mm - Fits Wire O.D 2.5-5.0mm

## Self-Laminating Vinyl (B-427)

RoHS compliant to 2005/618/EC MCV amendment to RoHS Directive 2002/95/EC; UL approved

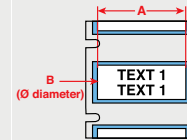
- Excellent material for wire and cable identification
- Features a white printable area with a clear "tail" that wraps around the marker to protect the print
- Durable, permanent acrylic adhesive has outstanding water and oil resistance
- Service temperature of -40°C to 70°C



PART NO.	COLOUR	LABEL WIDTH A mm	LABEL WIDTH B mm	WRITE ON AREA C mm	APPROX. WIRE GAUGE	LABELS PER ROW	LABELS PER PKG	REC. RIBBON
18373	White	25.4	25.4	9.5	12 to 10	1	250	M61-R4310
115108	White	25.4	25.4	9.5	12 to 10	1	2,500	M61-R4310
18422	White	19.1	38.1	12.7	10 to 4	1	250	M61-R4310
114875	White	19.1	38.1	12.7	10 to 4	1	2,500	M61-R4310
18428	White	25.4	38.1	12.7	10 to 4	1	250	M61-R4310
114876	White	25.4	38.1	12.7	10 to 4	1	2,500	M61-R4310
18432	White	38.1	38.1	12.7	10 to 4	1	250	M61-R4310
114877	White	38.1	38.1	12.7	10 to 4	1	1,000	M61-R4310
18380	White	25.4	63.5	19.1	Cables	1	100	M61-R4310
114873	White	25.4	63.5	19.1	Cables	1	1,000	M61-R4310

## Permasleeve Heat-Shrink Polyolefin (B-342)

- 3:1 heat shrinkable sleeve fit snugly around wires for maximum insulation protection and permanent identification
- Fade-resistant and smudge-proof for superior aesthetic appearance
- Cold resistant and flame-retardant with an operating temperature of -55°C to 135°C
- Meets SAE-AMS-DTL-23053/5C (Class 1), SAE-AS-81531, MIL-STD-202; RoHS Compliant; and UL Recognized



PART NO.	COLOUR	APPROX. WIRE GAUGE	RANGE OF WIRE DIAMETER mm	SUPPLIED DIAMETER B mm	SLEEVE LENGTH A mm	RECOVERED DIAMETER mm	SLEEVES PER ROLL	REC. RIBBON
18457	White	22 to 16	1.2 - 2.8	3.2	25.8	1.2	100	M61-R4310
115010	White	22 to 16	1.2 - 2.8	3.2	25.8	1.2	1,000	M61-R4310
18458	White	22 to 10	1.6 - 3.8	4.7	25.8	1.6	100	M61-R4310
115088	White	22 to 10	1.6 - 3.8	4.7	25.8	1.6	1,000	M61-R4310
18459	White	16 to 8	2.4 - 5.5	6.4	25.8	2.4	100	M61-R4310
115115	White	16 to 8	2.4 - 5.5	6.4	25.8	2.4	1,000	M61-R4310
115008	White	22 to 16	1.2 - 2.8	3.2	44.8	1.2	1,000	M61-R4310
115011	White	20 to 10	1.6 - 3.8	4.7	44.8	1.6	1,000	M61-R4310
18779	White	16 to 8	2.4 - 5.5	6.4	44.8	2.4	1,000	M61-R4310

## Permanent Heat Shrink Wire Identification

Brady's non-adhesive, printable heat shrink wire marking sleeves fit snugly around wires or cables for maximum insulation protection and permanent identification. Brady's heat shrink sleeving is a full-circle design that provides fast and permanent wire marking. Clear, legible text can be printed on the wire and cable sleeving with a Brady printer for reliable wire identification.

Brady heat shrink sleeving materials excel in extreme environments, including temperature fluctuations and environments that require abrasion and chemical resistance.



## BMP®71 Portable Printer

- Ideal for the office, warehouse, racks and shelves, pipes, control panels, face plates, wires and cables and much more
- Portable and easy to carry with attached handle
- Prints on more than 30 different Brady material types
- Large full colour graphic LCD display – see the label before you print
- Thermal transfer print technology
- Simple to load, smart chipped labels and ribbons for automatic font sizing and calibration
- Include extensive library of over 500 built-in graphics, plus built-in barcodes and serialisation
- The BMP®71 includes your choice of MarkWare® or LabelMark® software. Also compatible with Brady Workstation. Go to [Workstation.BradyID.com](http://Workstation.BradyID.com) for further details

PART NO.	DESCRIPTION
872044	BMP®71 Printer* w/ MarkWare® Software
115158	BMP®71 Printer* w/ LabelMark® Software
114881	Hardcase
114882	Softcase
871843	AC Adaptor
871844	Quick Charger
114885	Battery
114886	Cleaning Kit
147998	HandiMark® / TLS 2200® Media Adaptor
103788	USB Cable

\*Label printer ships with Hardcase, Charger/AC Adaptor, 1 x Roll of M71-31-423, White Die Cut Labels, 1 x R6000 Ribbon Cartridge, TLS / Handimark Roll Adaptor, USB Cable, Quickstart Guide, a CD including the Printer Driver, User Guide and Tutorial.



**BMP®71**  
LABEL PRINTER

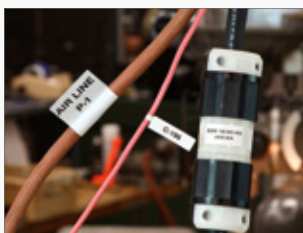


**MARKWARE**



**LABELMARK**

### ■ The one way to faster, easier label printing!



**ELECTRICAL LABELLING**



**DATA COMMUNICATIONS**



**GENERAL IDENTIFICATION**



**PERMASLEEVE**



**SELF-LAMINATING LABELS**



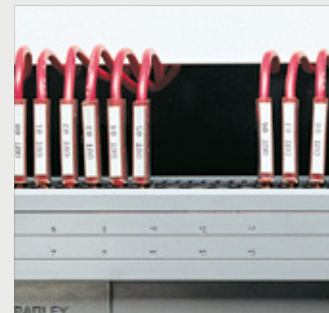
**SAFETY LABELS**

## Durasleeve® Wire Marking (B-390)

- Long lasting and durable marking of wires and cables
- Legend is at all times protected by the tube and can easily be replaced
- Available in White, 15mm or 30mm length

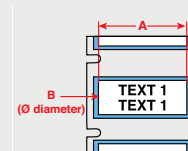
PART NO.	QTY/ROLL	SIZE	COLOUR	COLOUR
B-390 Polypropylene Wire Marking Inserts				
872146	300	15 x 3.93mm Insert	White	M71-R6000
872147	300	30 x 3.93mm Insert	White	M71-R6000
872148	3,000	15 x 3.93mm Insert	White	M71-R6000
872149	3,000	30 x 3.93mm Insert	White	M71-R6000

PART NO.	QTY/ROLL	SIZE
Durasleeve Wiremarking Carriers		
13255	1,000	15mm - Fits Wire O.D 1.3-3.0mm
13256	1,000	15mm - Fits Wire O.D 2.5-5.0mm
13262	500	30mm - Fits Wire O.D 1.3-3.0mm
13263	500	30mm - Fits Wire O.D 2.5-5.0mm



## Permasleeve Heat-Shrink Polyolefin (B-342)

- 3:1 heat shrinkable sleeve fit snugly around wires for maximum insulation protection and permanent identification
- Fade-resistant and smudge-proof for superior aesthetic appearance
- Cold resistant and flame-retardant with an operating temperature of -55°C to 135°C
- Meets SAE-AMS-DTL-23053/5C (Class 1), SAE-AS-81531, MIL-STD-202; RoHS Compliant; and UL Recognized

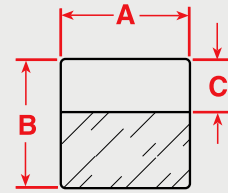


PART NO.	COLOUR	APPROX. WIRE GAUGE	RANGE OF WIRE DIAMETER mm	SUPPLIED DIAMETER B mm	SLEEVE LENGTH A mm	RECOVERED DIAMETER mm	SLEEVES PER ROLL	REC. RIBBON
115085	White	22 to 16	1.2 - 2.8	3.2	25.8	1.2	100	R-4300
115010	White	22 to 16	1.2 - 2.8	3.2	25.8	1.2	1,000	R-4300
115087	White	20 to 10	1.6 - 3.8	4.7	25.8	1.6	100	R-4300
115088	White	20 to 10	1.6 - 3.8	4.7	25.8	1.6	1,000	R-4300
115086	White	16 to 8	2.4 - 5.5	6.4	25.8	2.4	100	R-4300
115016	White	16 to 8	2.4 - 5.5	6.4	25.8	2.4	1,000	R-4300
115008	White	22 to 16	1.2 - 2.8	3.2	44.8	1.2	1,000	R-4300
115011	White	20 to 10	1.6 - 3.8	4.7	44.8	1.6	1,000	R-4300
115014	White	16 to 8	2.4 - 5.5	6.4	44.8	2.4	1,000	R-4300



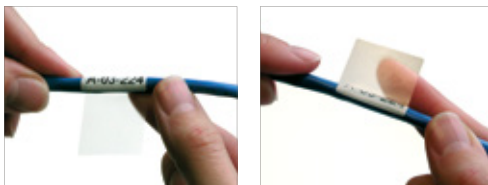
## Self Laminating Vinyl (B-427)

- UL recognised and roHs compliant
- A self-laminated format with a white printable zone and a translucent overlaminating area
- An excellent material for wire and cable identification
- Good clarity, conformability and is self-extinguishing
- Outstanding water and oil resistance
- Suitable for BMP®71 Printer



PART NO.	COLOUR	LABELS PER ROLL	DIMENSIONS		WRITE ON	WIRE GAUGE	REC. RIBBON SERIES
			A (mm)		B (mm)		C (mm)
115102	White	250	25.40	25.40	9.53	12-10	R-4300
115108	White	2500	25.40	25.40	9.53	12-10	R-4300
114804	White	250	19.05	38.10	12.70	10-4	R-4300
114875	White	2,500	19.05	38.10	12.70	10-4	R-4300
115100	White	250	25.40	38.10	12.70	10-4	R-4300
114876	White	2,500	25.40	38.10	12.70	10-4	R-4300
115093	White	250	38.10	38.10	12.70	10-4	R-4300
114877	White	1,000	38.10	38.10	12.70	10-4	R-4300
115101	White	100	25.40	63.50	19.05	Cables	R-4300
114873	White	1,000	25.40	63.50	19.05	Cables	R-4300
A41675	White	50	38.10	152.40	38.10	Cables	R-4300
A41676	White	500	38.10	152.40	38.10	Cables	R-4300

### Applying a self-laminating vinyl label is easy!



**1.**  
Apply the printed area to your wire.

**2.**  
Wrap the clear area around the wire covering the printed area.

**3.**  
Once applied, the clear laminate will protect your legend for years to come.





## Brady Workstation Software

The latest in label creation software, Brady Workstation is revolutionising how you design and print labels and signs. Simply pick the apps you need to get the job done, and enjoy the benefits of simple, efficient and flexible label creation. All apps come with a 30 day no obligation trial period to make sure the apps you download work for you.

### INCLUDE A BRADY PRINTER:

Brady Workstation now works seamlessly with the full range of Brady desktop and portable printers. Users can easily connect a Brady printer to a computer with Brady Workstation to access and print their labels and signs, all without the need to install any drivers.

### LABEL CREATION SUITES:

These suites include a combination of apps and are tailored to help with specific label situations. With suites for wire identification, product identification, safety and facility identification, data automation and protected label templates, Brady Workstation has all of your labelling needs covered.

■ [Learn more at Workstation.BradyID.com](http://Workstation.BradyID.com)

## Labelmark® Label Marking Software

- Reduce label creation time for improved productivity
- Create alphanumeric labels easily and instantly
- Software prints to all stock and custom sized labels
- For applications such as: wire and cables, rating plates, cable trays, barcoding, safety facility and more!
- Windows based Labelmark® labelling software
- Written specifically for identification applications in the telecommunication and electrical markets.

### SYSTEM REQUIREMENTS:

**Processor:** 1.5 GHz

**Supported Operating Systems:** Windows 7® Professional & Enterprise (32 or 64 bit), Windows 8® Professional & Enterprise (32 or 64 bit), Windows 8.1® Professional & Enterprise (32 or 64 bit), LabelMark Add-In applications support only 32 bit versions of Microsoft Office.

**Memory:** 2 GB

**Hard Disk Space:** Hard drive with at least 2 GB of available space

**Part No.:** 143511

GET BRADY  
WORKSTATION TODAY!



Download Brady Workstation at  
[workstation.bradyid.com](http://workstation.bradyid.com)



Fill the workstation  
with the apps you want and  
leave out the ones you don't



Save time by quickly  
designing labels and printing  
them on your Brady printer

