

IDENTIFICATION

CARROLL ARE PROVEN LEADERS IN CABLE MARKING

CARROLLPLATE

7

MARKFAST

10

KMARK

12

HEATEX

14

STEELMARK LASER

16

STEELMARK MANUAL DIY

19

MY-DATA-123

markfast

UNDERSTANDING CARROLLPLATE

CarrollPLATE™ is a revolutionary marking system consisting of a raised, foam-backed, self-adhesive polyester label.

Supplied pre-printed via a hardwearing thermal transfer printing process.

“ THE PERFECT ALTERNATIVE

to Engraved Plate Marking. ”

BENEFITS OF CARROLLPLATE

- ▶ **Ideal for sequential data**
- ▶ **Competitively priced against engraved plate marking alternatives**
- ▶ **Quick turnaround/lead time**
- ▶ **Aggressive industrial adhesive label, manufactured by Brady, a world leader in specialised identification materials**
- ▶ **Allows for graphics and drawings such as logos, barcodes and wiring diagrams**

CARROLLPLATE™

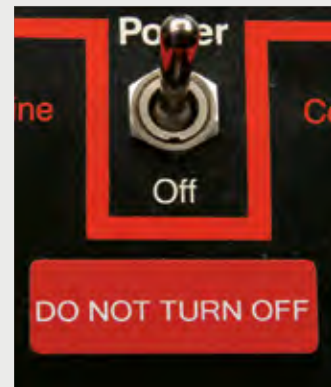
Why CarrollPLATE™

- Conveniently organised on rolls
- UL approved material
- Fast dispatch
- Aggressive industrial adhesive label
- Manufactured by Brady
- Logos, barcodes, wiring diagrams and much more
- Professional look; resembles engraved plates, and has a glossy top coat
- Excellent UV weathering and chemical resistance properties



PART NO.	SIZE mm	LABEL COLOUR	TEXT COLOUR
CP25X101BK	25 x 101	BLACK	WHITE
CP25X101SV	25 x 101	SILVER	BLACK
CP25X101WT	25 x 101	WHITE	BLACK
CP25X101YL	25 x 101	YELLOW	BLACK
CP25X101RD	25 x 101	RED	WHITE
CP8X125BK	8 x 125	BLACK	WHITE
CP8X125WT	8 x 125	WHITE	BLACK
CP15X27WT	15 x 27	WHITE	BLACK
CP15X45BK	15 x 45	BLACK	WHITE
CP15X45SV	15 x 45	SILVER	BLACK
CP15X45WT	15 x 45	WHITE	BLACK
CP15X45YL	15 x 45	YELLOW	BLACK
CP15X45RD	15 x 45	RED	WHITE
CP30X60BK	30 x 60	BLACK	WHITE
CP30X60SV	30 x 60	SILVER	BLACK
CP30X60WT	30 x 60	WHITE	BLACK
CP30X60YL	30 x 60	YELLOW	BLACK
CP30X60RD	30 x 60	RED	WHITE
CP50X100BK	50 x 100	BLACK	WHITE
CP50X100SV	50 x 100	SILVER	BLACK
CP50X100WT	50 x 100	WHITE	BLACK
CP50X100YL	50 x 100	YELLOW	BLACK
CP50X100RD	50 x 100	RED	WHITE
CP69X150BK	69 x 150	BLACK	WHITE
CP69X150SV	69 x 150	SILVER	BLACK
CP69X150WT	69 x 150	WHITE	BLACK
CP69X150YL	69 x 150	YELLOW	BLACK
CP69X150RD	69 x 150	RED	WHITE

Note: Minimum quantity of 20 labels per type applies to all orders. Labels are printed in mono-colour.



CARROLLPLATE™

CarrollPLATE™ is suitable for use in all instances where an engraved plate may have previously been used, and many other situations.

Typical Applications Include-

Name Plates, ID Plates, Electrical Panel ID, Switchboards, Instrument Controls, Wall Plate ID, Decorative Labels. Their durability, bold and raised appearance make them an excellent identification tool.

Ordering Information-

Simply select your:

- Label Part No. from table opposite
- Font
- Quantity (Minimum of 20 per label type)
- Content (text, logo, barcode, etc)

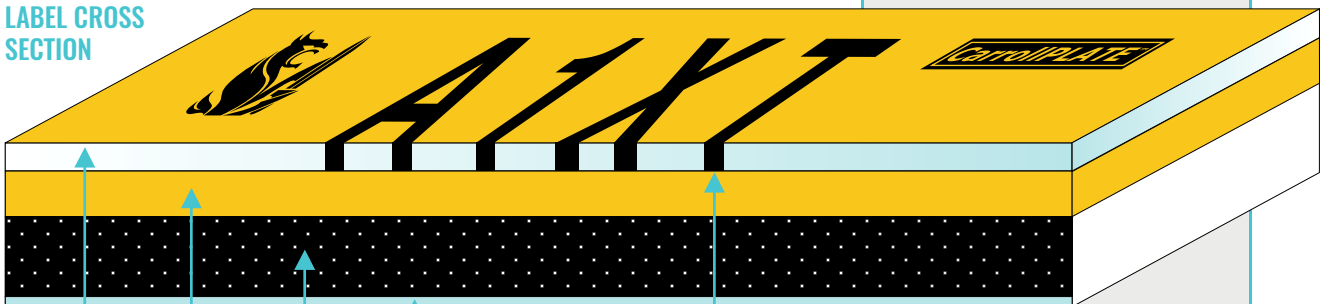
Note: logo's must be in mono - bitmap or jpeg form.



CLOSE-UP VIEW OF LABEL PRINTS

A 1 X T

LABEL CROSS SECTION



Clear Topcoat

Coloured Polyester Substrate

Foam

Aggressive Adhesive

Text is "burnt" into the topcoat to create a hardwearing finish

WE DO ENGRAVED PLATES!

Engraved Plates are a practical alternative to traffolyte. They are solvent resistant and have an aggressive adhesive.

- ▶ To find out more, please contact our Customer Service Team



ENGRAVED PLATE

UNDERSTANDING MARKFAST

Carroll's Markfast are pre-printed wiremarkers designed for all PLC, control and general marking applications.

Wiremarkers come in trees and range in colours for matching to your workplace safety and identification needs.

“ **GUARANTEED
& ERROR-FREE.**

Can be dispatched within 24hours. Large orders may vary. ”

ORDER MARKFAST TODAY

- 1 ▶ **Quick and easy form to fill out**
- 2 ▶ **Choose sleeves to be pre-mounted**
- 3 ▶ **Trees available in 5 different colours!**

Available on request - call Carroll today on 1800 777 458.

Important notes: ▶ 32 markers per tree ▶ Two lines of custom header data per tree
▶ Convenient hole for grouping trees together ▶ Sleeves provided separately
or assembled to the tree. ▶ Trees are made of Acrylic Halogen-Free material

MARKFAST LASER TREES & SLEEVES

Designed for all PLC, control and general marking applications for wires and cables from 0.25 to 16mm² (1.3 to 7.6mm² or 22-6AWG) and beyond, by utilising the unique cable tie applied accessory.

Features:

- Fast and easy to apply
- Super clear laser engraved characters
- Broad wire range
- Guaranteed error free markers, when data received electronically
- Indelible and easy to read

Trees only

CODE	PART NO.	COLOUR
I	MF10E	Black on White
	MF10E-RD	White on Red
	MF10E-YL	Black on Yellow
	MF10E-GN	White on Green
	MF10E-BL	White on Blue
	MF10E-BK	White on Black
	MF18E	Black on White
	MF18E-RD	White on Red
	MF18E-YL	Black on Yellow
	MF18E-GN	White on Green
	MF18E-BL	White on Blue
	MF18E-BK	White on Black
	MF23E	Black on White
	MF23E-RD	White on Red
	MF23E-YL	Black on Yellow
	MF23E-GN	White on Green
	MF23E-BL	White on Blue
	MF23E-BK	White on Black

Trees & Sleeves Preloaded

CODE	PART NO.	COLOUR
I	MF10EP	Black on White
	MF10EP-RD	White on Red
	MF10EP-YL	Black on Yellow
	MF10EP-GN	White on Green
	MF10EP-BL	White on Blue
	MF10EP-BK	White on Black
	MF18EP	Black on White
	MF18EP-RD	White on Red
	MF18EP-YL	Black on Yellow
	MF18EP-GN	White on Green
	MF18EP-BL	White on Blue
	MF18EP-BK	White on Black
	MF23EP	Black on White
	MF23EP-RD	White on Red
	MF23EP-YL	Black on Yellow
	MF23EP-GN	White on Green
	MF23EP-BL	White on Blue
	MF23EP-BK	White on Black

Sleeves

CODE	PART NO.	WIDE RANGE mm ²	WIRE Ø RANGE mm	SLEEVE LENGTH mm	PACK QTY
IA	MFS0/10	0.25–1.5	1.3–3.5	10	1000
	MFS0/18	0.25–1.5	1.3–3.5	18	1000
	MFS0/23	0.25–1.5	1.3–3.5	23	1000
	MFS1/10	0.75–4.0	2.3–4.8	10	1000
	MFS1/18	0.75–4.0	2.3–4.8	18	1000
	MFS1/23	0.75–4.0	2.3–4.8	23	1000
	MFS2/10	4.0–16.0	4.2–7.6	10	500
	MFS2/18	4.0–16.0	4.2–7.6	18	500
	MFS2/23	4.0–16.0	4.2–7.6	23	500
	MFSCT	UNLIMITED	UNLIMITED	20	100

Specifications

MATERIAL	ACRYLIC – HALOGEN FREE		
TAGS PER TREE	32		
TAG LENGTHS	10MM, 18MM & 23MM		
MAXIMUM CHARACTERS PER LABEL	Length	Standard	Condensed
	10mm	5	7
	18mm	8	12
	23mm	13	18

MY-DATA-123



SELECT THE WIRE MARKER



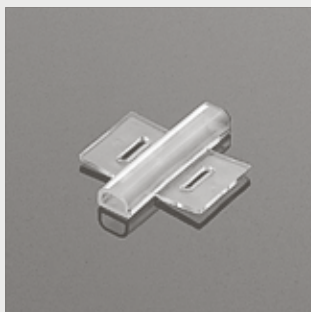
SNAP APART



FIX



DUAL SLEEVE



CABLE TIE SLEEVE

UNDERSTANDING KMARK

Carroll's Kmark are designed for general cable marking applications. Applied to the cable with nylon ties.

Ordering is easy!

“ **CAN BE USED
INDOORS &
OUTDOORS.**

Also great for switchboards and riser cabinets. ”

ORDER KMARK TODAY

- 1 ▶ **Quick and easy form to fill out**
- 2 ▶ **UV-treated sleeves**
- 3 ▶ **Maximum of 24 characters**

Available on request - call Carroll today on 1800 777 458.

Important notes: ▶ Fast and easy to apply. ▶ Quick to locate required markers.
▶ Supplied 'On Site' when you need them. ▶ Guaranteed error free markers, when data received electronically. ▶ Easy to read. Can be installed outdoors.
▶ 105mm length can have a maximum of 24 characters.



KMARK

Designed for general cable marking applications. Applied to the cable with nylon ties.

Features:

- Fast and easy to install
- Conveniently organised on a cardboard backing
- Guaranteed error free markers, when data received electronically
- Easy to read
- Tear resistant

KMARK

CODE	PART NO.	MAXIMUM CHARACTERS	MARKER LENGTH mm	PACK QTY
I	KM35E	8	35	1
	KM70E	16	70	1
	KM105E	24	105	1

Kmark Markers Specifications

MATERIAL TYPE	Specially treated, UV resistant polypropylene
TEMPERATURE RANGE	-40°C to +120°C
DIMENSIONS	9.5mm x 35, 70 & 105mm
STANDARD CHARACTER HEIGHT	6.5mm
MAXIMUM 6MM CHARACTERS PER LABEL	35mm – 8 70mm – 16 105mm – 24
COLOUR	Bold block black print on yellow

Kmark Carrier Sleeves Specifications

MATERIAL TYPE	Transparent, UV stabilised polyethylene
TEMPERATURE RANGE	-75°C TO +80°C
DIMENSIONS	10mm x 47, 85 & 117mm
MOUNTING	Supplied with Nylon Cable Tie CT165B installed
CABLE TIE BUNDLE DIAMETERS	(CT200L & CT200LB & CT143B optional)
	CT165 – 44mm (1 3/4") ø. CT200L – 55mm (2") ø.

Send your data to markfast@carroll.com.au or upload via our website.
Call our Customer Service team on 1800 777 458 if you need assistance.

MY-DATA-123



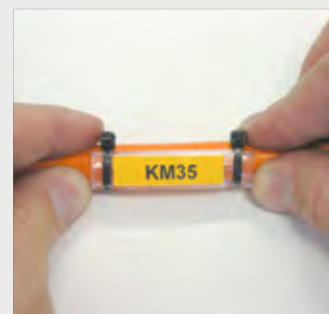
KMARK



SELECT THE WIRE MARKER



TIE



FIX