

Pegasus

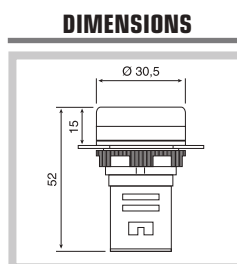
LED pilot lights $\varnothing 22$

With colour caps - Black line

LED PILOT LIGHTS



DESCRIPTION	POWER SUPPLY	CODE	WEIGHT gr	MIN. PACK QTY.
Single LED indicator X1 — ⊗ — X2	AC/DC 6V 1	PLML 2 L6	15	10
	AC/DC 12V 1	PLML 2 L12	15	10
	AC/DC 24V	PLML 2 L24	15	10
	AC/DC 48V	PLML 2 L48	15	10
	AC/DC 110V	PLML 2 L110	15	10
	AC 220V	PLML 2 L220	15	10
	AC 380V 1	PLML 2 L380	15	10

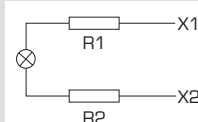


MAIN TECHNICAL DATAS

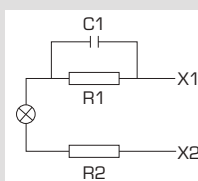
Comply with rules		EN60947-5-1 - GB14048.5
Operational temperature	C°	-5 +40
Operational umidity		45%90%
AC rated frequency	Hz	50/60
Rated insulation voltage	1 min. V	2500V
Over voltage category	EN60947.1	III
Pollution grade	EN60947.1	3
Protection degree	EN60529	IP65, IP2X terminals
Connection:		
Terminal block caliber		A2
Terminal screw		M3,5
Flexible and solid conductors section	min./max.	n.1 1/2,5 mm ² - n.2 1/2,5 mm ²
Rated operational voltage Ue	AC/DC V	6 12, 24, 48, 110
	AC V	220 - 380
Rated operating current Ie	mA	≤ 80 6,12V
	mA	≤ 20 24, 48, 110, 220, 380
Electrical life	h	≥ 30.000
Brightness	cd/m ²	≥ 60
Mounting		∅ 22,5

DIAGRAM

Resistance



Capacity resistance

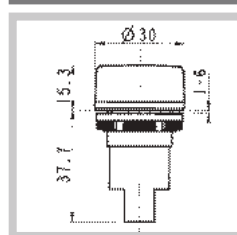


AC 220....380V

PILOT LIGHT



DESCRIPTION	COL. INDEX	CODE	WEIGHT gr	MIN. PACK QTY.
Single lampholder indicator BA9s Lamp not included X1 — ⊗ — X2 AC/DC 250V max. 2W	■	PLML1	15	10
	■	PLML2	15	10
	■	PLML3	15	10
	■	PLML4	15	10
	□	PLML5	15	10



1 On demand execution

2 Insert lens colour code: 1 - red, 2 - green, 3 - yellow, 4 - blue, 5 - white