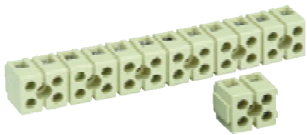
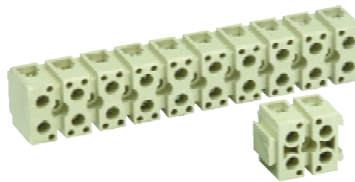


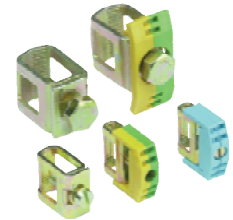
**TS1**



**TS2**



**CC**



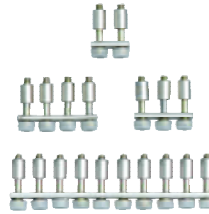
← Terminal strips / Barrette de connexion →

← Clamping yokes / bornes de serrage pour barre →

**CCSC**



**CC**



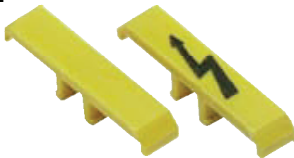
**TF**



← Cross-Connection / Shunt →

← Test Plug-Soc / Pointe de test →

**WL**



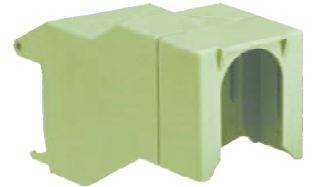
**GM**



**ES**



**IC**



← Warning Labels / Plaquette d'alarme → ← Group Marking / Marquage de groupe → ← Group Marking / Marquage de groupe → ← Isolation Cover / Carter d'isolation →

10

**EP**



**EP**



**EP**



**EP**

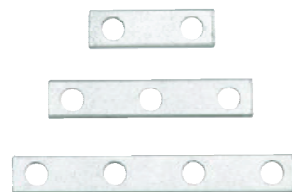


← End Plate / Plaquette d'extrémité →

**EP**



**CCB**



**SL**



**DINBRACKT M5/M6**



← End Plate / Plaquette d'extrémité → ← Cross-Connection / Shunt → ← Switchable Cross-Con / Interconnexion commutable → ← Bracket / Console →

**GM**



**BSBI**



**MODI-KIT  
KIT-BORNE**



- Contains most popular terminals
- Accessories to suit
- Terminal markers and pen
- Ideal for panel modification
- Ideal for design, R & D etc
- Contient la plupart des bornes standard
- Accessoires appropriés
- Repérage des bornes et stylo
- Idéal pour la modification du panneau
- Idéal pour la conception, la recherche et le développement

← Group Marking / Marquage de groupe → ← Busbar Support Block / Bloc support pour barre → ← DIN rail terminals Modi-Kit / Kit de blocs de jonction standard pour rails DIN →

