

Pegasus

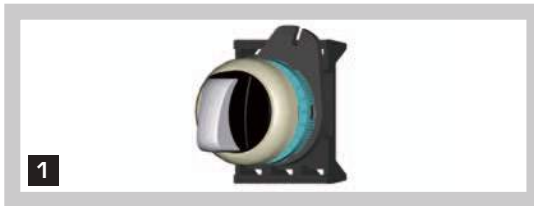
Rotary Switches \varnothing 22

Not Light and Light - Nickel line - IP66



AUTOMATION TECHNOLOGIES

WITH SHORT OPERATOR



WITH KEY



POSITIONS	COL. INDEX	CODE	KEY REMOVAL			CODE
			L	O	R	
 90°		PSMB1DONL		*		PSCR8DOCNL
		PSMB2DONL				
		PSMB3DONL				
		PSMB4DONL			*	PSCR8DOENL
		PSMB5DONL		*	*	PSCR8DONNL
		PSMB8DONL				
 45°		PSMB1D2NL				PSCR8D2CNL
		PSMB2D2NL				
		PSMB3D2NL		*		
		PSMB4D2NL				
		PSMB5D2NL				
		PSMB8D2NL				
 45°		PSMB1TONL		*		PSCR8TOCNL
		PSMB2TONL	*			PSCR8TOANL
		PSMB3TONL			*	PSCR8TOENL
		PSMB4TONL	*	*	*	PSCR8TOGNL
		PSMB5TONL	*	*	*	PSCR8TOHNL
		PSMB8TONL	*	*	*	PSCR8TOKNL
			*	*	PSCR8TONNL	
 45°		PSMB1T3NL				PSCR8T3CNL
		PSMB2T3NL				
		PSMB3T3NL		*		
		PSMB4T3NL				
		PSMB5T3NL				
		PSMB8T3NL				
 45°		PSMB1T2NL		*		PSCR8T2CNL
		PSMB2T2NL				
		PSMB3T2NL	*			PSCR8T2ANL
		PSMB4T2NL				
		PSMB5T2NL	*	*		PSCR8T2HNL
		PSMB8T2NL				
 45°		PSMB1T1NL		*		PSCR8T1CNL
		PSMB2T1NL				
		PSMB3T1NL			*	PSCR8T1ENL
		PSMB4T1NL				
		PSMB5T1NL		*	*	PSCR8T1NNL
		PSMB8T1NL				

1 The rotary switches with out light suitable to operate a central contact, replace the letter "B" with the letter "C": PSMC....

2 For rotary switches with Left-Right operating angles replace the letter "DO" with "SD" PSMB1DO or PSCR8SDE...
For key removal, see position 45° and relative final codes.

* Key removal position