

# Product Overview



<b>Line</b>	<b>P02</b>	<b>P03</b>	<b>HP03</b>
<b>Product type</b>	pendant station	pendant station	pendant station
<b>Picture</b>			
<b>Page</b>	12	12	12-25 (safety NC contact)
<b>Characteristics</b>	shock proof - heat resistant two direction interlocked IP65 double insulation indelible laser engraved symbols	shock proof - heat resistant two direction interlocked IP65 double insulation indelible laser engraved symbols	shock proof - heat resistant two direction interlocked IP65 double insulation indelible laser engraved symbols ergonomic design

<b>Line</b>	<b>FGR1</b>	<b>FGR2</b>	<b>FGR3</b>
<b>Product type</b>	rotary gear limit switch	rotary gear limit switch	rotary gear limit switch
<b>Picture</b>			
<b>Page</b>	28	30	32
<b>Characteristics</b>	self extinguishing housing/cover ratio 012-033-050-075-100-150-200-400 IP65 flanged fixing /rear shaft version potentiometer available	aluminium housing/self ext. cover ratio 012-033-050-100-200 IP65 flanged fixing /rear shaft version	self extinguishing housing/cover ratio from 1:8 to 1:460 IP66 rear shaft version available encoder or potentiometer available

<b>Line</b>	<b>TR60</b>	<b>TR85</b>
<b>Product type</b>	busbar energy transmission	busbar energy transmission
<b>Picture</b>		
<b>Page</b>	52	54
<b>Characteristics</b>	height 60 mm – 40, 60 A pre-mounted conductors (blue line) conductors to be pulled (yellow line) easy and fast installation complies with the relevant international standards	height 85 mm – 40, 70, 100, 140, 200 A pre-mounted conductors (blue line) conductors to pulled (yellow line) easy and fast installation complies with the relevant international standards



# Product Overview

## DC30

pendant station



12

shock proof - heat resistant  
two direction interlocked  
IP65 double insulation  
indelible laser engraved symbols  
high power contact block 25 A

## PL

pendant station



14

shock proof - heat resistant  
two direction interlocked  
IP65 double insulation  
indelible laser engraved symbols  
from 5 to 12 holes

## PLB

pendant station



15

shock proof - heat resistant  
two direction interlocked  
IP65 double insulation  
indelible laser engraved symbols  
from 4 to 14 holes

## TLP

fixed/pendant station



16

shock proof - heat resistant  
two direction interlocked  
IP65 double insulation  
indelible laser engraved symbols  
compact and modern design

## FCR

position limit switch



38

self extinguishing housing/cover  
lthe 16 A cam switch  
IP65  
for single or double speed motor  
fully adjustable aluminium rods

## FFH

position limit switch



40

self extinguishing housing/cover  
lthe 20 A cam switch  
IP65 double insulation  
rubber covering wheel  
fully adjustable metallic rod

## FCP

position limit switch



41

self extinguishing housing/cover  
lthe 40 A cam switch  
IP65  
reinforced mechanical stop

## SCUDO

slip ring

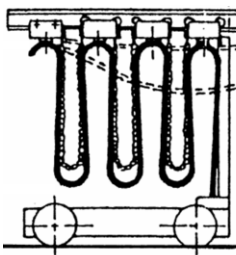


42

close PVC frame IP51  
modularity from 3 up to 15 rings  
80mm diameter rings  
rated operating current 20 A  
rated insulation voltage Ui 690 V

## Line 30/41

festoon energy transmission

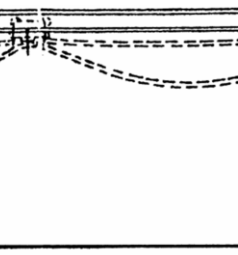


68

metallic "C" rail bar  
Line30: load capacity 100 kg/m  
Line 41 : load capacity 140 kg/m  
steel or plastic trolley  
ball bearing trolley

## Wire-Rope

festoon energy transmission

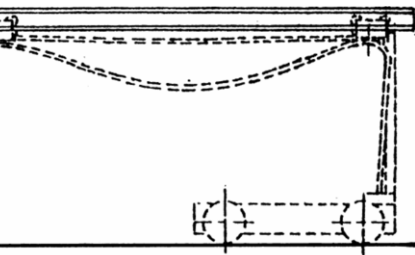


76

trolley load capacity 8 kg  
with one or two roller/s

## I-Beam

festoon energy transmission



77

light series trolley load capacity:  
50 kg – IPE-IPN 80, 100 beam  
heavy series trolley load capacity:  
200 kg – IPE-IPN 80, 100, 120 beam

## G75/100

warning horn



43

G75: 50 Hz / G100: 300 to 350 Hz  
G75: 88dB / G100: 93.5 dB  
G75 IP30 / G100 IP65\*  
\*double insulation

# Certifications



## QUALITY

**Giovenzana**, leader in the elevator and lifting equipment field, has gained a prominent position in the automation sector with its launch of industrial control accessories into the market. For many years, all commercial and industrial operations have been integrated within the framework of the **UNI EN ISO 9001:2008**.

Ref.: quality system **CSQ certificate N 9105. GIOV.**

**Giovenzana** has fulfilled its commitment to the quality of its products since 1995. The quality system is the end user's guarantee that all production stages are maintained under strict control and adhere to the requirements set by the company, both in terms of customer expectations and compliance to the relevant international standards as proved by the various certificates **Giovenzana** holds for its products. With the certification **UNI EN ISO 14001:2004**, **Giovenzana** keeps up with new technologies in order to reduce the consumption of raw materials, energy and natural resources and to minimize refuse and emissions in hopes of progressively reducing negative impacts on the environment.

**Giovenzana products are in conformity to directives Rohs, Pfos, Rae and Reach.**

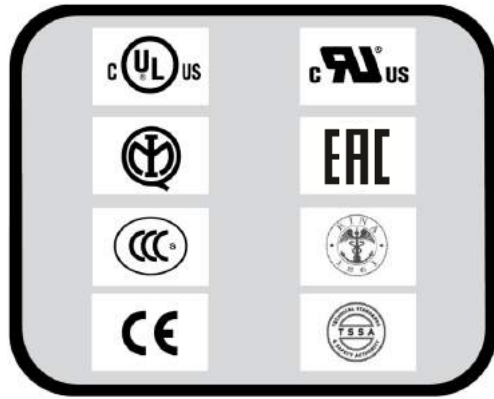
Ref.: certification **CSQ N 9191. GIBV.**

## COMPLIANCE

All **Giovenzana** products are manufactured according to the relevant Cee directives. **Giovenzana** certifies this compliance with a declaration of conformity.

## CERTIFICATIONS

In order to reach the high level of quality **Giovenzana's** products achieve, they are tested by multiple third parties. In order to obtain the UL mark, **Giovenzana** submits its products to be tested by Underwriter Laboratories Inc., one of the most prestigious independent certification companies in the world.



## CEE DIRECTIVES

As of January 1, 1997 it is compulsory to CE mark all electro-mechanical products. This has been outlined by two important regulations:  
72/23 CEE and 93/68 CEE Low Voltage Directives.

## CE MARK

European directives, applied to all national regulations, set the minimum requirements in term of safety of all electrical material sold within the EU. The compliance to these requirements is certified to the manufacturer by the CE mark placed on the products.

## STANDARDS

**Giovenzana's** products comply with both the European EN and the American UL standards. These regulations, such as the EN 60024 (covering the safety requirements of the electrical circuits on board industrial machinery), define the characteristics, performance and use of the products.

## EN EUROPEAN STANDARDS

The EN European standards usually originate from IEC International and are the result of the collaboration between CENELEC (European Committee for Electrotechnical Standardization) member countries. These standards cover and eliminate existing national standards that may be contradictory or out of date.





**Pendant stations for small hoist application, in single / double row or direct power circuits switchings and tail lift controls. page 12 to 25**

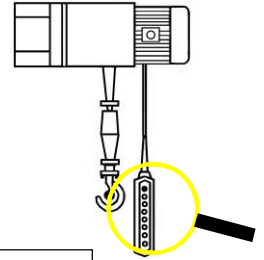
Giovenzana International Company, leader in lifting equipment control, makes a wide range of standard products for all installation requirements, and all built to high quality specification and safety guidelines. The Lift Equipment products series comply with: IEC 947-5-1, EN60947-5-1, UL508 and use: IEC 204-1, EN60204-1, EN ISO 13850, all achieved according to the needs and requirements of Cee 89/392. All operators are coloured and the laser-engraved, indelible legends comply with EN60204-1 and FEM 9.941. CERTIFICATIONS: The pendant stations P02, P03, HP03, PL series can be certificated cUL.

Use (recommended)	Line	Picture	Characteristic
<p>□ Hoist</p>	<b>P02</b>		Two push button pendant stations for small hoist : <ul style="list-style-type: none"> <li>• single speed or two speed motor</li> <li>• direct motor control 1kW – 1speed</li> <li>• available in UL/CSA requirements</li> </ul>
	page 12	<i>(item available in kit-form,; enclosure, contact block and operator available separately for customization)</i>	
	<b>P03</b>		Three push button pendant stations for small hoist: <ul style="list-style-type: none"> <li>• single speed motor or two speed motor</li> <li>• direct motor control 1kW – 1speed</li> <li>• available in UL/CSA requirements</li> </ul>
page 12	<i>(item available in kit-form,; enclosure, contact block and operator available separately for customization)</i>		
<p>□ Overhead crane</p>	<b>HP03</b>	 <i>Ergonomic! design</i>	Ergonomic pendant stations for small hoist : <ul style="list-style-type: none"> <li>• single speed motor</li> <li>• two speed motor</li> <li>• available in UL/CSA requirements</li> <li>•  <u>safety line available page 25</u></li> </ul>
	page 12	<i>(item available in kit-form,; enclosure, contact block and operator available separately for customization)</i>	
	<b>DC30</b>	 <i>High power!</i>	Pendant stations for high power hoist: <ul style="list-style-type: none"> <li>• direct motor control single phase and three phase</li> <li>• lth 25A - 1phase/2poles 230...400V 2.2kW</li> <li>                  3phase/3poles 230...400V 4kW</li> </ul>
page 12	<i>(item available in kit-form,; enclosure, contact block and operator available separately for customization)</i>		
	<b>PL</b>		SINGLE-row pendant stations for crane control circuits: <ul style="list-style-type: none"> <li>• single speed motor or two-speed motor</li> <li>• available in different configuration with 5-7-8-10-12 holes</li> <li>• available in UL/CSA requirements</li> </ul>
	page 14	<i>(item available in kit-form,; enclosure, contact block and operator available separately for customization)</i>	
	<b>PLB</b>		DOUBLE-row pendant stations for crane control circuits: <ul style="list-style-type: none"> <li>• single speed motor</li> <li>• two speed motor</li> <li>• available in different configuration with 4-6-8-10-12-14 holes</li> </ul>
page 15	<i>(item available in kit-form,; enclosure, contact block and operator available separately for customization)</i>		
<p>□ Lifting platform □ Truck tails lift</p>	<b>TLP</b>	 <i>Compact! design</i>	Compact pendant stations for lifting platform and tails lift application (pendant or wall fixing)
	page 16	<i>(item available in kit-form,; enclosure, contact block and operator available separately for customization)</i>	

# Pendant stations



Hoist control: **P02 P03 HP03 DC30**



LIFTING EQUIPMENT

## Characteristics:

- Bi-directional, mechanically interlocked
- IP 65 double insulation IEC/EN60529
- General and electrical data page 23
- Laser engraved symbols comply with EN60204-1, FEM 9.941
- Shock proof and heat resistant



P02



P03



HP03



DC30

PICTURE	LAYOUT	CONFIGURATION	CODE	CONTACT TYPE	WEIGHT [gr]
		SINGLE SPEED (* TILTING BUTTON 16A – 250Vac ½ HP)	<b>P02.RM</b>		230
		SINGLE SPEED	<b>P02.1</b>		230
			<b>P02.2</b>		250
			<b>P02.4</b>		250
			(* HIGH POWER CONTACTS DIRECT MOTOR CONTROL 1Kw 1ph	<b>P02.CD</b>	
		TWO SPEED	<b>P02.D2</b>		250
		SINGLE SPEED	<b>P03.1</b>		440
			<b>P03.2</b>		450
			<b>P03.3</b>		460
			<b>P03CD</b>		460
			TWO SPEED	<b>P03D2</b>	
		SINGLE SPEED	<b>HP03</b>		330
		TWO SPEED	<b>HP03.D2</b>		350
		SINGLE SPEED	<b>DC30</b>		600
			<b>DC30.RG</b>		600
			<b>DC30.GE</b>		600
			TWO SPEED	<b>DC30D2</b>	

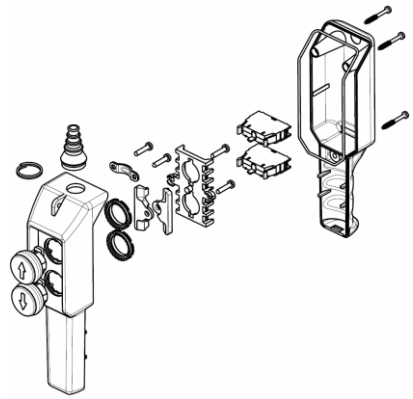
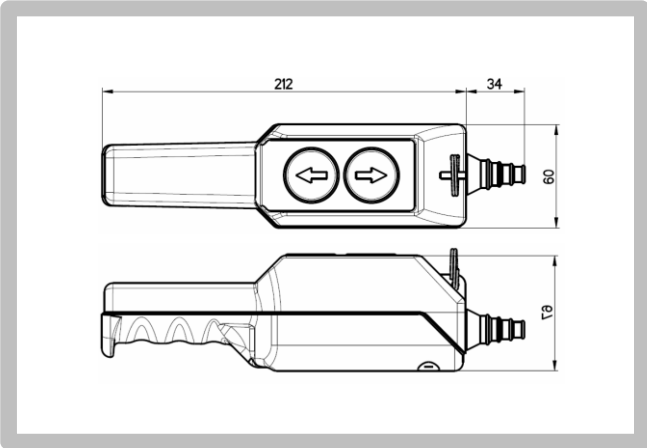
# Pendant stations



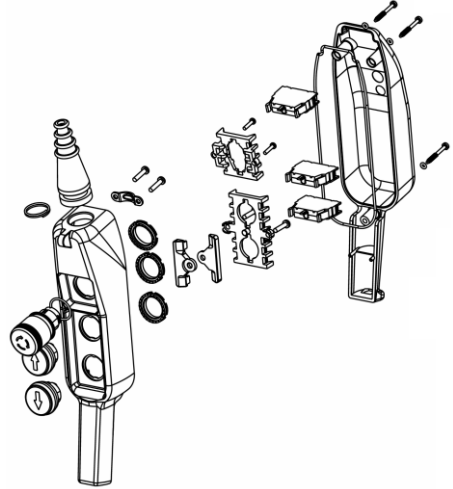
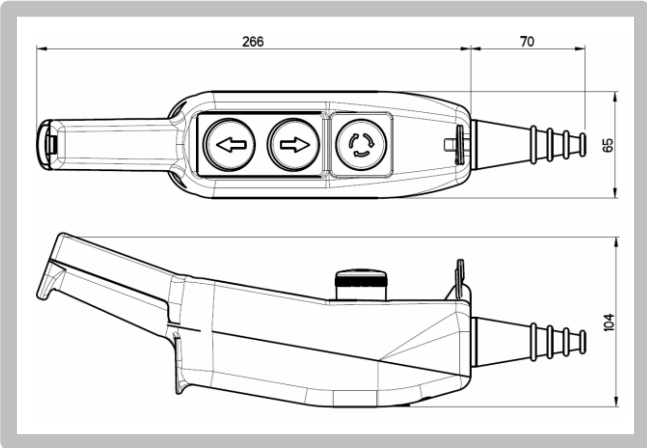
Dimensions: **P02 P03 HP03 DC30**

LIFTING EQUIPMENT

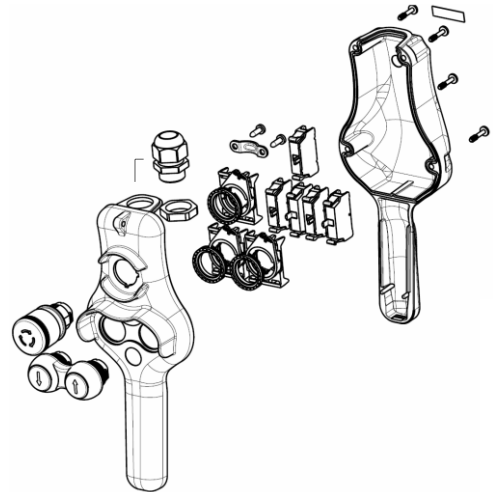
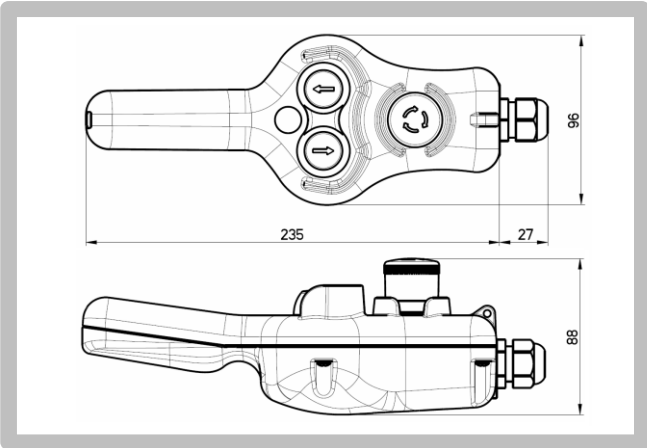
**P02**



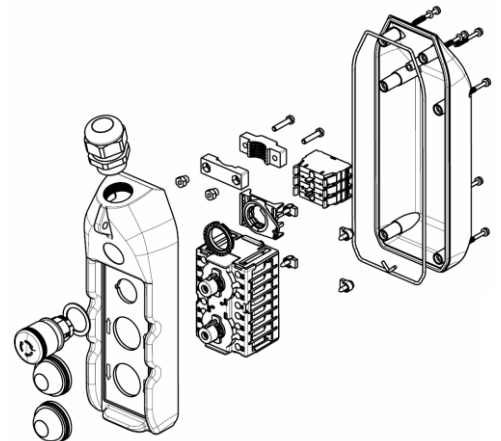
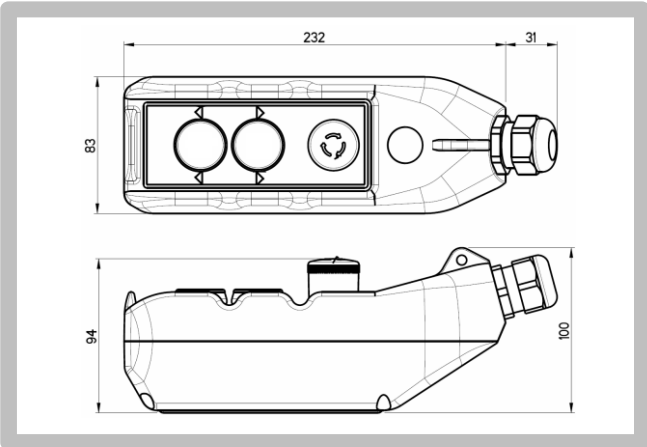
**P03**



**HP03**



**DC30**



# Pendant Stations

cranes control circuits: **PL**



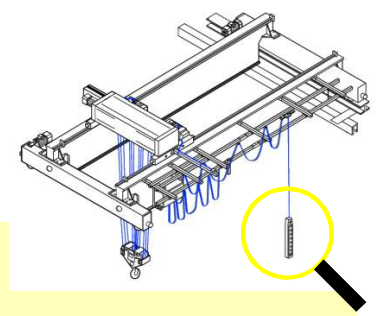
**LIFTING EQUIPMENT**



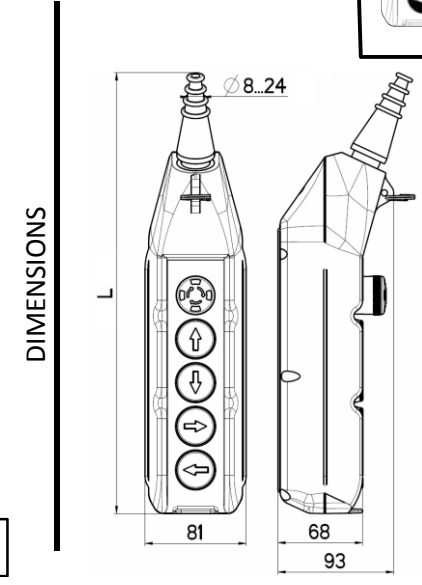
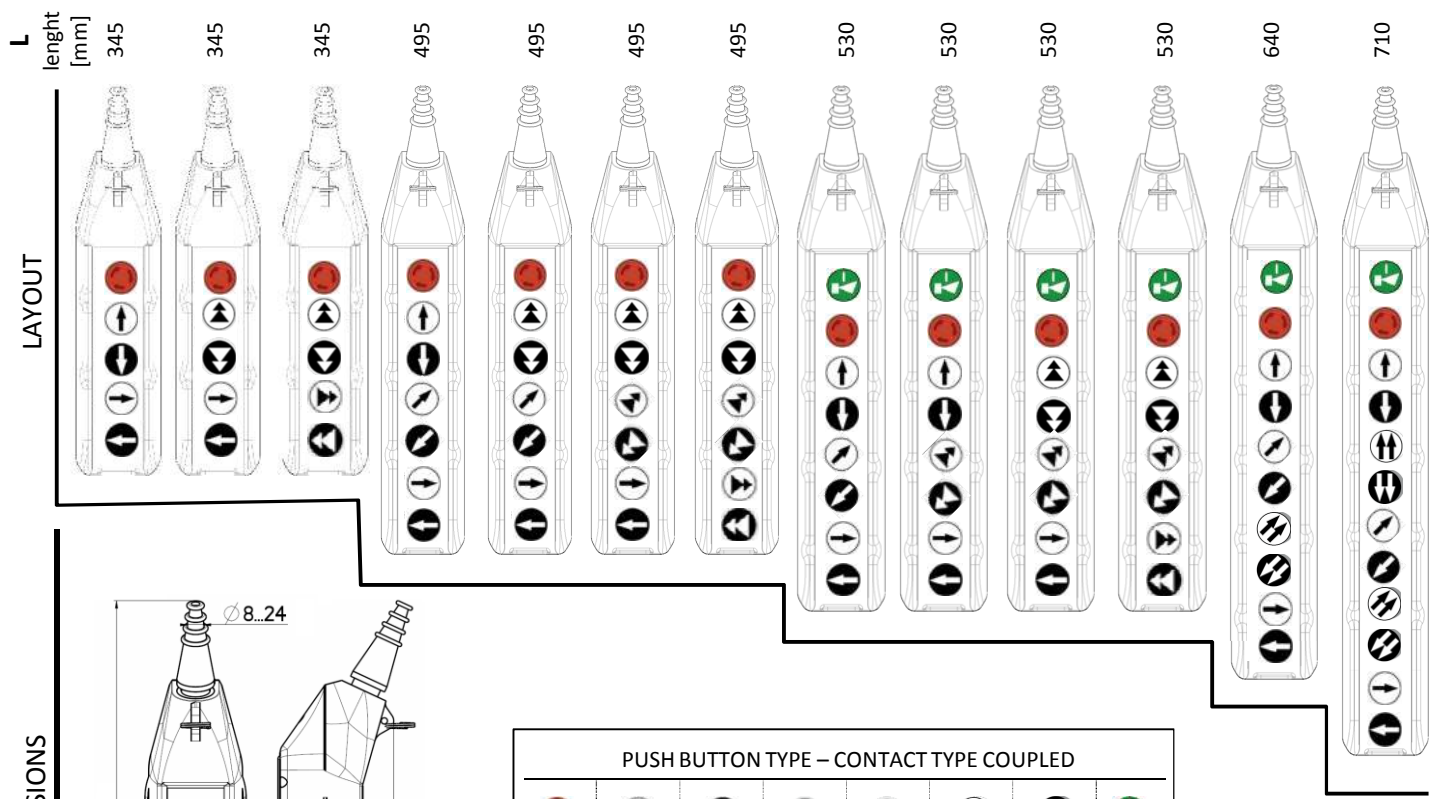
KIT Available See pg. 18  
Available in UL/CSA req.

### Characteristics:

- Bi-directional, mechanically interlocked
- IP 65 double insulation IEC/EN60529
- General and electrical data page 23
- Laser engraved symbols comply with EN60204-1, FEM 9.941
- Shock proof and heat resistant
- Available in UL/CSA requirements



CODE	PL05	PL05D2	PL05D4	PL07	PL07D2	PL07D4	PL07D6	PL08	PL08D2	PL08D4	PL08D6	PL10	PL12
weight [gr.]	560	590	620	740	770	800	830	830	860	890	920	990	1.140
N° push button	5	5	5	7	7	7	7	8	8	8	8	10	12



**PUSH BUTTON TYPE – CONTACT TYPE COUPLED**

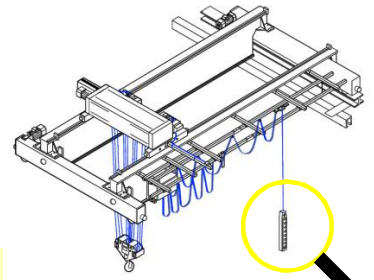

(\*) two speed contact block

# Pendant Stations

cranes control circuits: **PLB**



KIT Available See pg. 18

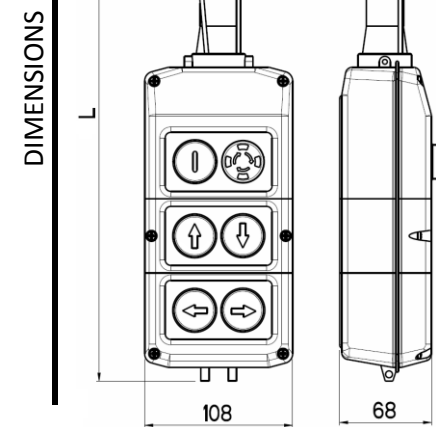
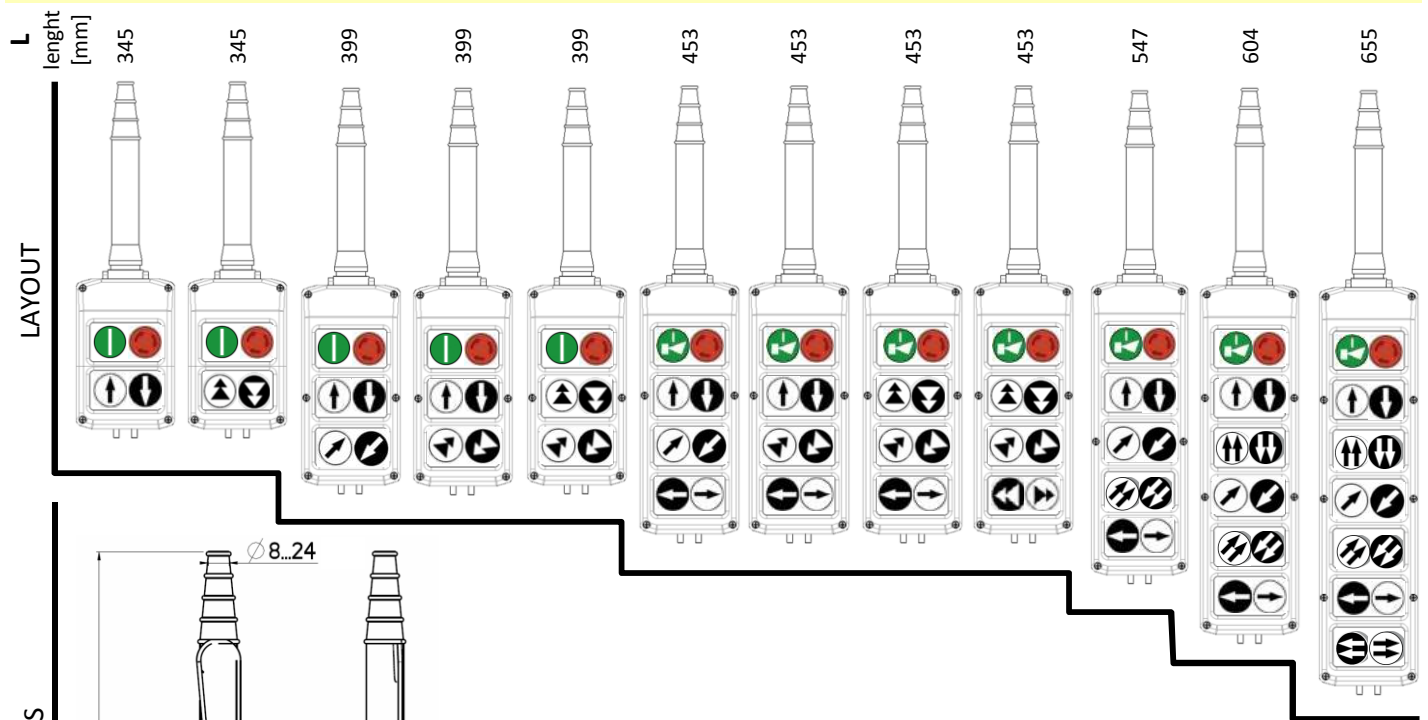


LIFTING EQUIPMENT

### Characteristics:

- Bi-directional, mechanically interlocked
- IP 65 double insulation IEC/EN60529
- General and electrical data page 23
- Laser engraved symbols comply with EN60204-1, FEM 9.941
- Shock proof and heat resistant

CODE	PLB04	PLB04D2	PLB06	PLB06D2	PLB06D4	PLB08	PLB08D2	PLB08D4	PLB08D6	PLB10	PLB12	PLB14
weight [gr.]	560	590	620	770	800	830	830	860	890	920	990	1.140
N° push button	4	4	6	6	6	8	8	8	8	10	12	14



TIPO DI PULSANTE – TIPO DI CONTATTO ABBINATO								



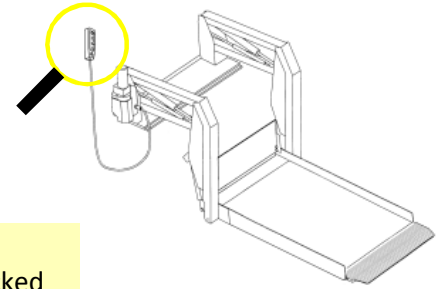


**LIFTING EQUIPMENT**

KIT Available See pg. 18



MOBILE-PENDANT FIXING (with WALL BRACKET accessories) WALL FIXING

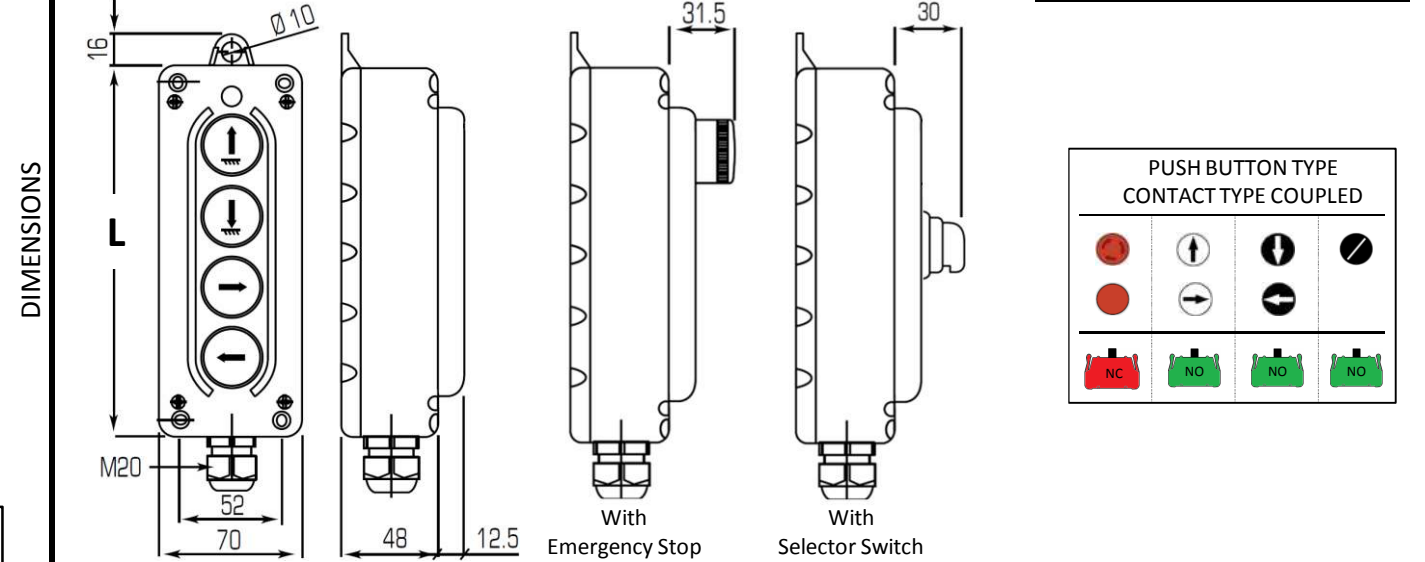
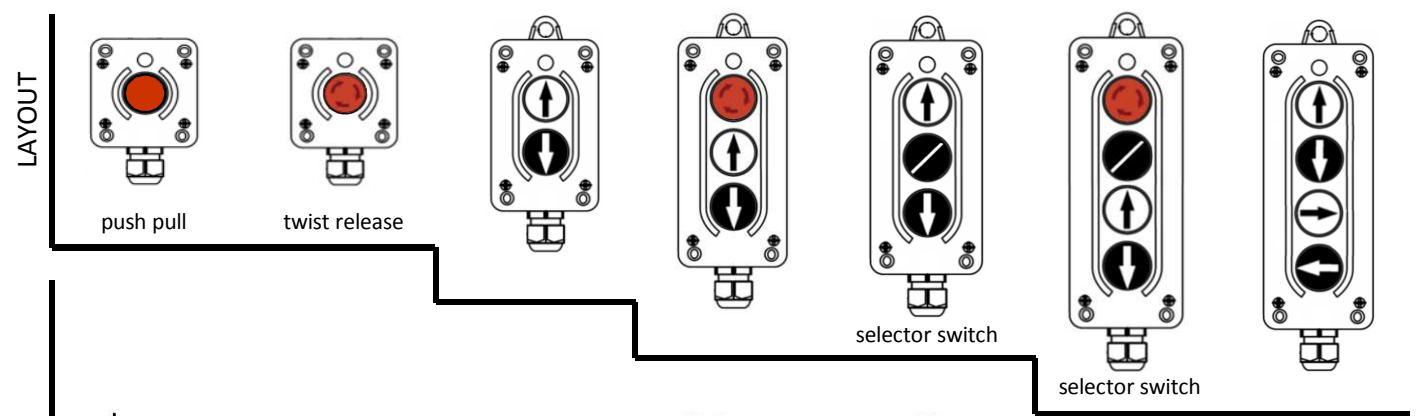


### Characteristics:

- Compact and modern design
- Bi-directional, mechanically interlocked
- IP 65 double insulation IEC/EN60529
- General and electrical data page 23
- Laser engraved symbols comply with EN60204-1, FEM 9.941
- Contact block with spring cage terminal
- Shock proof and heat resistant
- Mobile-Pendant (with wall bracket accessories) or wall fixed mounting

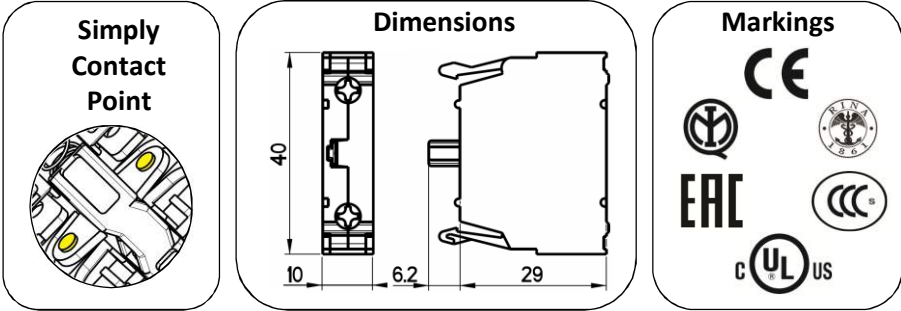
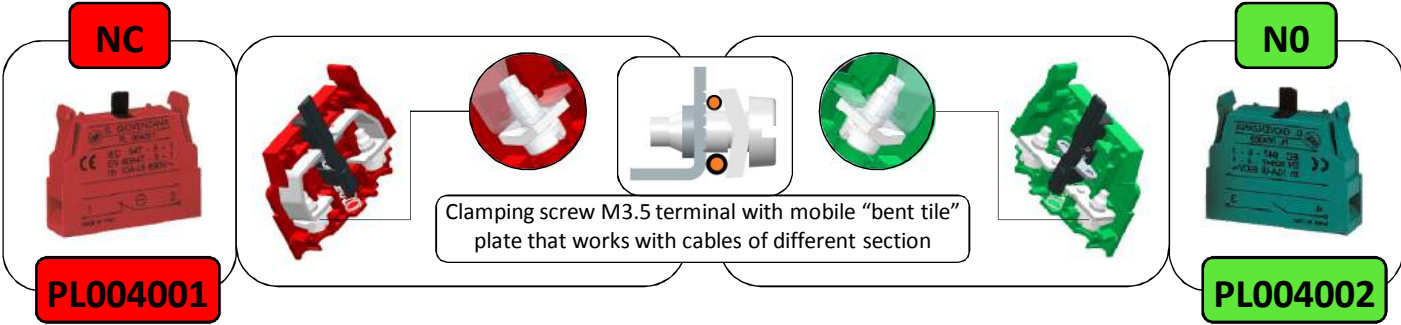
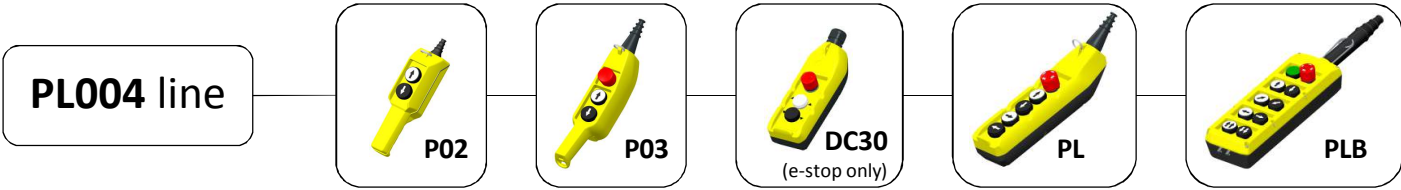
CODE	TLP1-EPP	TLP1-ESR	TLP2	TLP3-B	TLP3-D	TLP4-E	TLP4-C
------	----------	----------	------	--------	--------	--------	--------

weight [gr.]	120	120	200	255	255	314	314
N° push button	1	1	2	3	3	4	4
L length [mm]	80	80	115	150	150	185	185

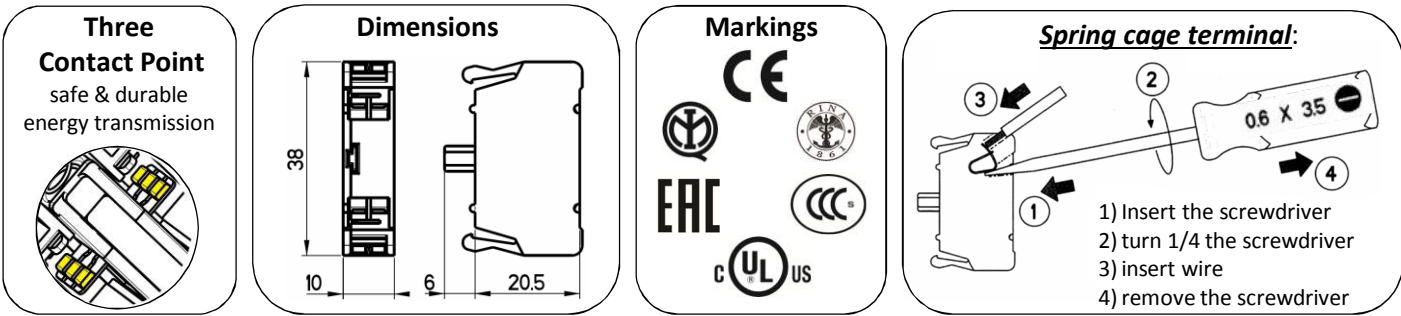
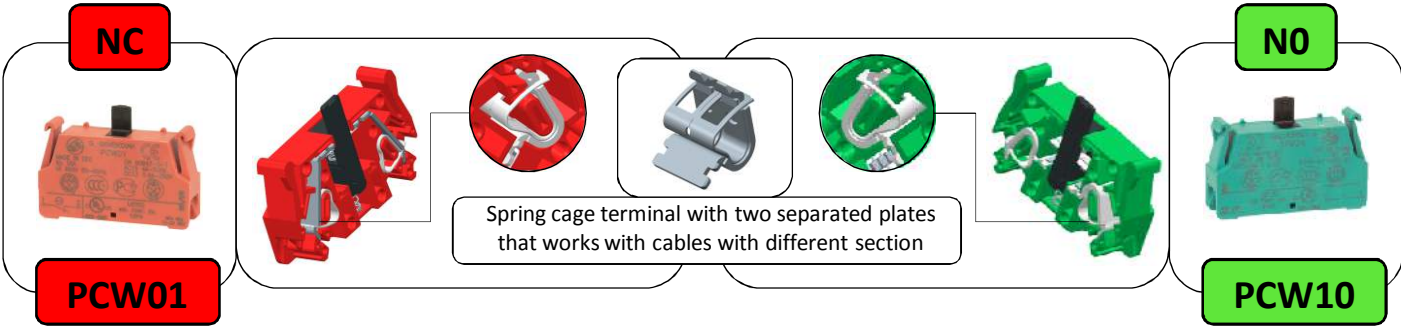




**LIFTING EQUIPMENT**



Technical data see page 23



# Pendant / Fixed Stations



**KIT To be customized**  
Create your customized station in 4 steps

**LIFTING EQUIPMENT**

**STEP 1**  
Choose station type



**P02**



**P03**



**PL**



**PLB**



**TLP**



Holes n°	CODE	WEIGHT [gr]
2	<b>P02K</b>	180
3	<b>P03K</b>	258
5	<b>PL05K</b>	410
7	<b>PL07K</b>	540
8	<b>PL08K</b>	600
10	<b>PL10K</b>	700
12	<b>PL12K</b>	800
4	<b>PLB04K</b>	410
6	<b>PLB06K</b>	510
8	<b>PLB08K</b>	610
10	<b>PLB10K</b>	710
12	<b>PLB12K</b>	810
14	<b>PLB14K</b>	910
1	<b>TLP1K</b>	100
2	<b>TLP2K</b>	130
3	<b>TLP3K</b>	160
4	<b>TLP4K</b>	200



## STEP 2 Choose OPERATOR

## STEP 3 Choose CONTACT TYPE

**LIFTING EQUIPMENT**

(\*) Symbols according to FEM 9.941  
Customized engraving available (min. quantity applies)

P02-P03-PL-PLB

TLP

(\*)

		<b>GREEN START</b>	<b>GREEN START ALARM</b>	<b>MUSHROOM OPERATOR Ø 30 TURN TO RELEASE EN ISO 13850</b>
PL005004	PL005019			
		PLO05001	PLO05002	WITH VISON STANDARD PLO13001 PLO13002
		<b>ALARM</b>	<b>BLUE</b>	
PL005023	PL005008			<b>MUSHROOM OPERATOR Ø 40</b>
		PLO05003	PLO05034	
		<b>WHITE</b>	<b>BLACK</b>	
PL005012	PL005027			<b>MUSHROOM OPERATOR Ø 40 KEY RELEASE</b>
		PLO05035	PLO05036	
		<b>RED</b>	<b>GREEN</b>	
PL005005	PL005020			<b>KEY SWITCH</b>
		PLO05037	PLO05038	
		<b>ROTARY SWITCH</b>		
PL005024	PL005009			
		0-1 90° PLO06001		
		1-0-2 45° PLO06002		
PL005013	PL005028	0<1 45° PLO06004		
		(key removable in "0")		
		<b>LENS CAP</b>		
PL005031	PL005016			
		PLO0800.		
		0-1 90° PLO07001		
PL005032	PL005017	1-0-2 45° PLO07002		
		1>0<2 45° PLO07003		
PL005033	PL005018			

**CONTACT BLOCKS**

NC NO

1 NC PLO04001  
1 NO PLO04002

**CONTACT BLOCKS**

NC NO

1 NC PCW01  
1 NO PCW10

**LED LAMP**

POWER SUPPLY	CODE
AC/DC 12V	PLO045L12
AC/DC 24V	PLO045L24
AC/DC 48V	PLO045L48
AC/DC 110V	PLO045L110
AC 220V	PLO045L220

**LAMP HOLDERS**

BA9s PLO04007

**LED LAMP**

POWER SUPPLY	CODE
AC/DC 12V	PCW5L12
AC/DC 24V	PCW5L24
AC/DC 48V	PCW5L48
AC/DC 110V	PCW5L110
AC 220V	PCW5L220

**LAMP HOLDERS**

BA9s PCWAD

(\*)

PL005006	PL005021
PL005025	PL005010
PL005014	PL005029

NOT for TLP

**MULTI-SPEED CONTACT BLOCKS**

DOUBLE STEP 1NO+1NO PLO04010

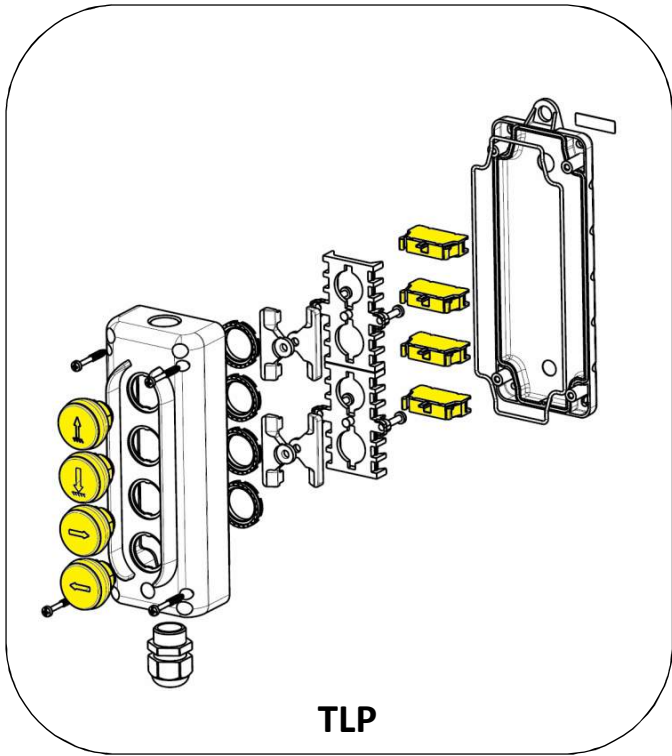
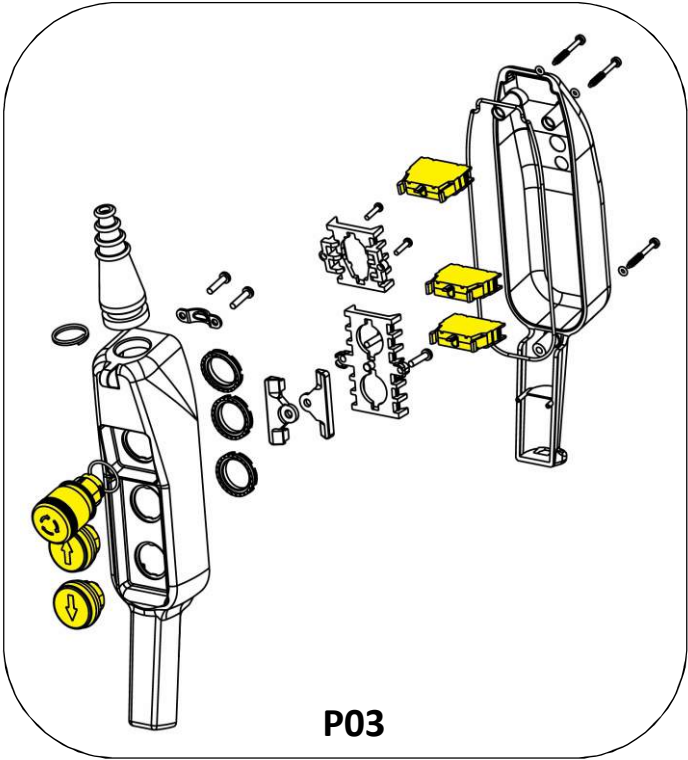
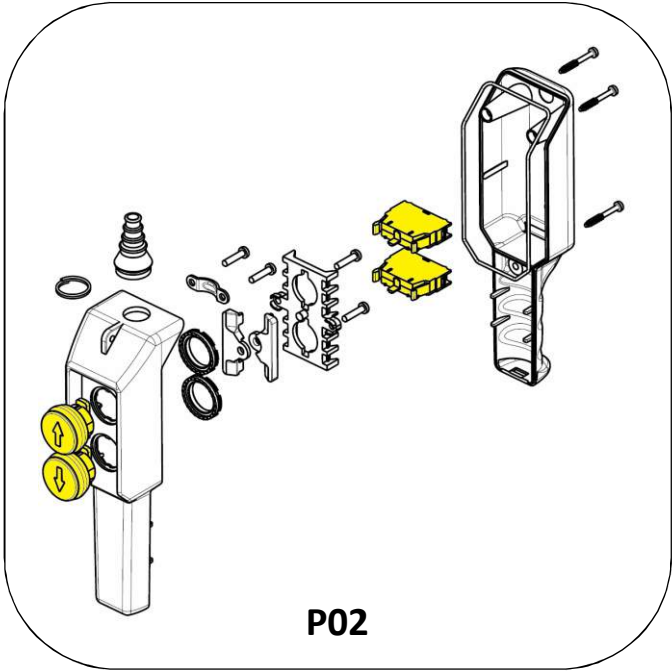
**HOLE PLUG**

PL015001



LIFTING EQUIPMENT

**STEP 4**  
Mounting instructions



**STEP 1**  
kit enclosures include

- Pendant stations (box, screws, gasket)
- Cable sleeve
- Cable clamp
- Suspension ring
- Push button interlock

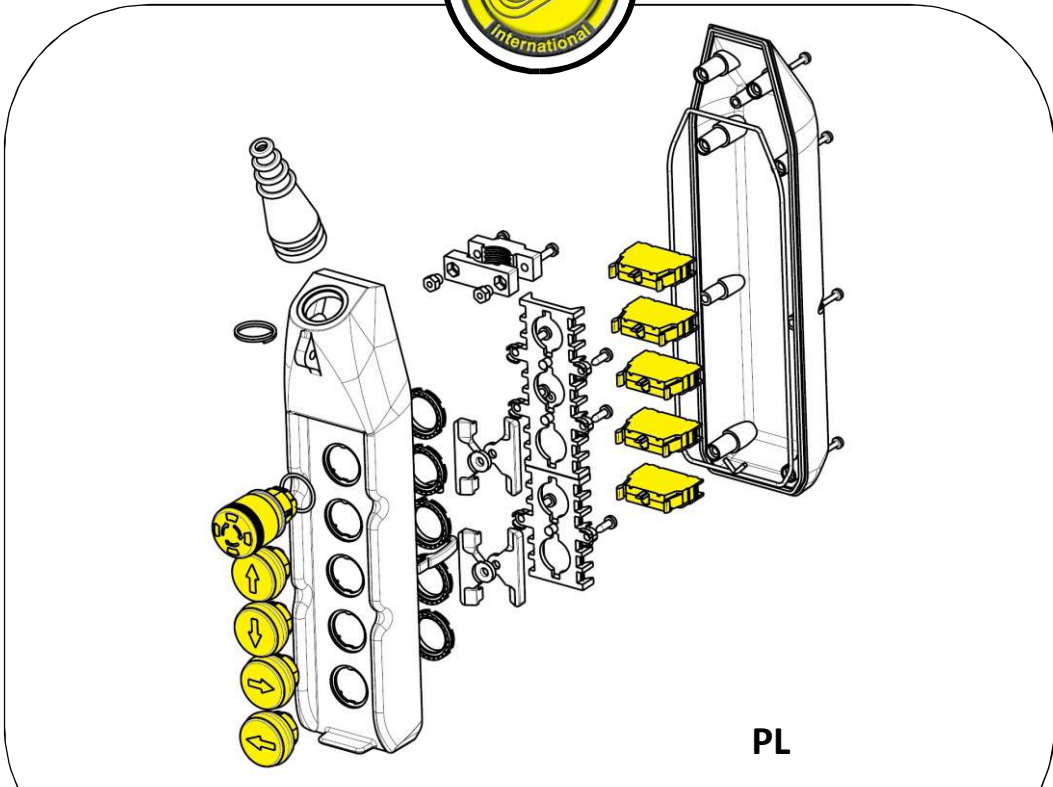
**STEP 2-3**  
(item in yellow colour)

- Contact block
- Push buttons

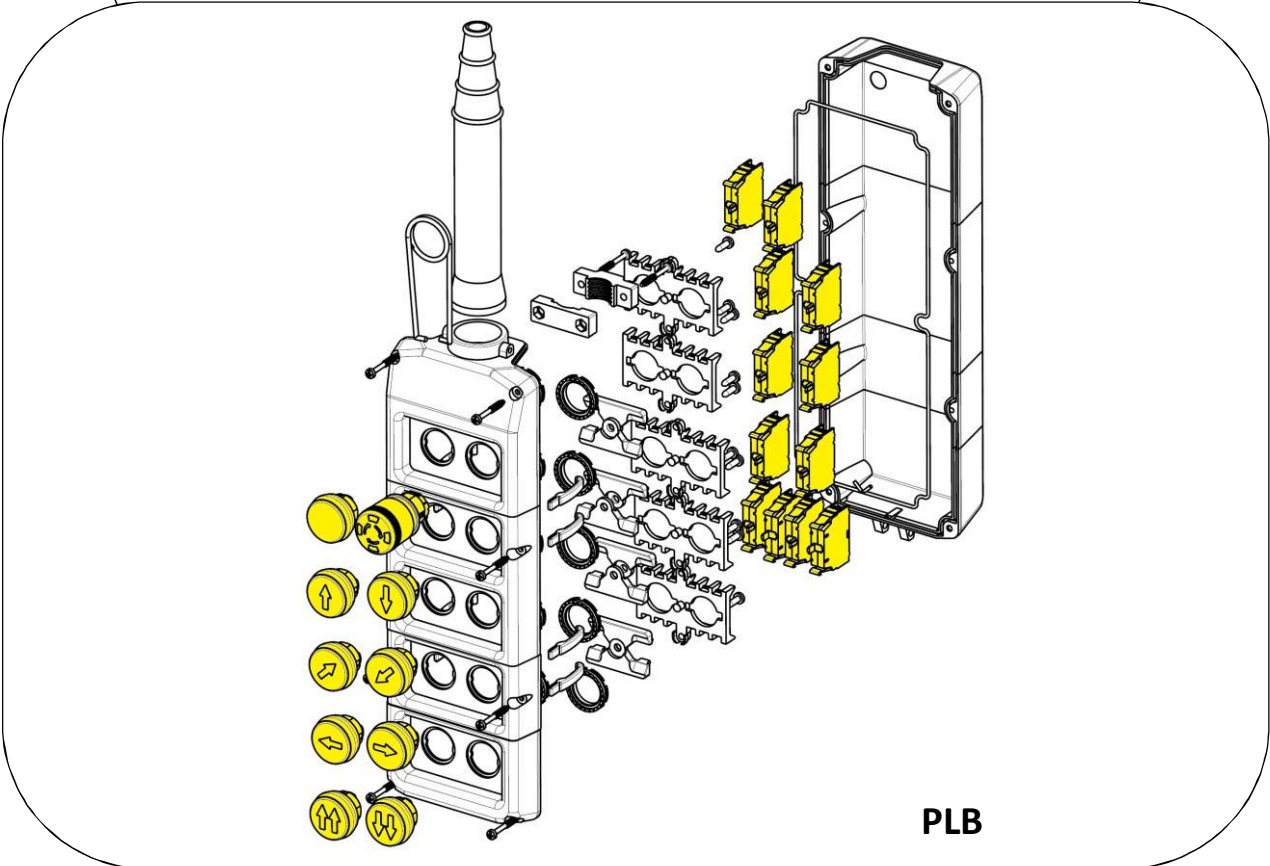
must be chosen and purchased separately from the enclosure kit



**LIFTING EQUIPMENT**



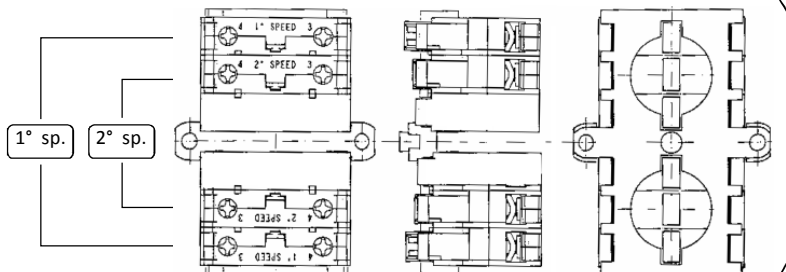
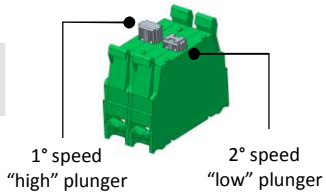
**PL**



**PLB**

**ASSEMBLY INSTRUCTION FOR  
1<sup>a</sup> - 2<sup>a</sup> SPEED CONTACT BLOCKS**

PL004010





LIFTING EQUIPMENT

**SPARE PARTS:**

P02 – P03 – PL – PLB – TLP

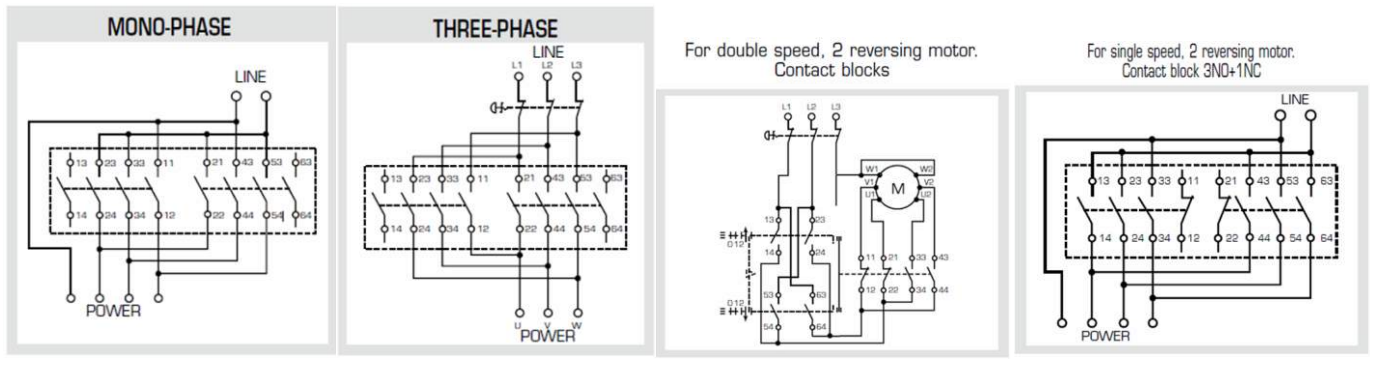
COUPLING PLATE		INTERLOCK		CABLE CLAMP LEVER	CABLE SLEEVE	
2 HOLES	PL003001	TOP	PL011001		VERSION	CODE
3 HOLES	PL003002	BOTTOM	PL011002	PL012001	P02 cable Ø 7...14	12906011
				NOT for TLP	P03 - PL05 cable Ø 7...18	12906006
					PL07...PL12 PLB04-PLB06 cable Ø 9...21	12906004
					PLB08-PLB14 cable Ø 12...24	12906005
					NOT for TLP	

☐ Operators and contacts block codes please go to page 19

**DC30**

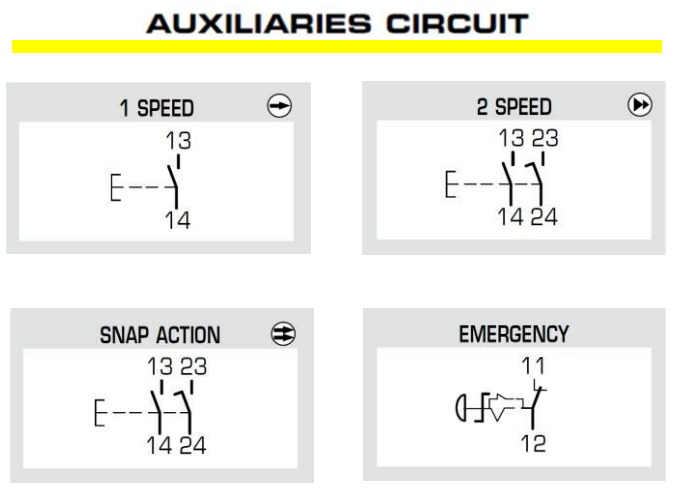
CONTACT BLOCKS		RUBBER BUTTON COVER		
	FOR SINGLE SPEED · REVERSING MOTORS			
		CODE		FOR
	3NO+1NC	30205085		DC30 DC30.GE
		30205087		DC30.RG
TWO-SPEED REVERSING MOTORS				
	CODE	FOR		
4NO (2NO+2NC progressive)	30205086	DC30D2		
mechanical interlock				
			COLOUR	CODE
			Black	11901044
			White	11901046

**DRAWINGS EXAMPLES**  
**POWER CIRCUITS**



**TLP ACCESSORIES**

WALL BRACKET		SPIRAL CABLE GLAND	
HOLES	CODE		CODE
1...3	16000061		12901054
4	16000062		





Note: P02 – P03 – HP03 – PL line available in UL/CSA requirements

General characteristics		P02 – P03 – HP03 – PL – PLB – TLP						DC30	
In conformity to standards		IEC / EN60947-5-1						IEC / EN60947-3	
Material		<b>P02</b>	<b>P03</b>	<b>HP03</b>	<b>PL</b>	<b>PLB</b>	<b>TLP</b>	ABS	
		PP	ABS	ABS	ABS	ABS	PP		
Material group		II						II	
Pollution class		3						3	
Climate temperature	operating	-25°C + 70°C						-25°C + 70°C	
	storage	-30°C + 70°C						-30°C + 70°C	
Climate resistance	IEC68 part 2-3	hot damp						hot damp	
	IEC68 part 2-30	unsettled hot damp						unsettled hot damp	
Cable entry		<ul style="list-style-type: none"> <li>▪ P02 – P03: rubber cable sleeve Ø7...18mm</li> <li>▪ PL – PLB: rubber cable sleeve Ø9...24mm</li> <li>▪ HP03 – TLP: cable gland M20</li> </ul>						cable gland M25	

Electrical characteristics contact blocks		P02 – P03 – HP03 – PL – PLB – TLP						DC30	
Markings									
Rated insulation voltage [Ui]		690V						500V	
Rated thermal current [Ith]		16A						25A	
Rated impulse withstand voltage [Uimp]		4kV						4kV	
Frequency		50Hz – 50/60 Hz type PCW (HP03-TLP)						50Hz	

### Rated operating current [Ie]

AC-15 alternate current		(V)	24	60	110	240	400	440	500	690	
	type: PL004.. P02/P03/DC30 e-stop/PL/PLB	(A)	16	12	8	6	4	3.5	3	1	-
	type: PCW.. HP03-TLP	(A)	10	8	6	5	4	4	4	2	-
DC-13 direct current		(V)	24	48	60	110	220	250			
	type: PL004.. P02/P03/DC30 e-stop/PL/PLB	(A)	2	1.2	0.85	0.4	0.25	-			-
	type: PCW.. HP03-TLP	(A)	2	2	1	0.4	-	0.4			-
AC-3 alternate current	1phase-2poles 230V-400V		-						2.2kW		
	3phase-3poles 230V-400V		-						3kW		
Conditional short circuit withstand current			1000A						1000A		
Fuse rating			gG 10A - 500V						aM 12A - 500V		
Contact insulation resistance			≤ 25mΩ						-		
Switching mechanism	type: PL004.. P02/P03/DC30 e-stop/PL/PLB		slow break double gap contacts single pad						slow break double gap contacts single pad		
	type: PCW.. HP03-TLP		slow break double gap contacts three pads								
Positive operation			NC contact block						-		
Terminal type	type: PL004.. P02/P03/DC30 e-stop/PL/PLB		M3.5 screw						M3.5 screw		
	type: PCW.. HP03-TLP		spring cage terminal								
Terminal capacity	type: PL004.. P02/P03/DC30 e-stop/PL/PLB		No. 1 or 2 flexible and solid conductor min 1 max 2.5 mm <sup>2</sup>						No. 1 or 2 flexible and solid conductor min 1 max 2.5 mm <sup>2</sup>		
	type: PCW.. HP03-TLP		No. 1 or 2 flexible and solid conductor min 0.5 max 2.5 mm <sup>2</sup>								

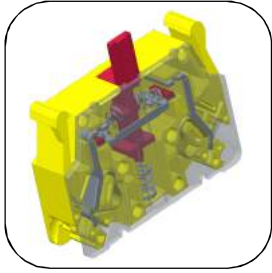
### UL508 characteristics

General use	600V ac	16A	-
Designation code (HD) Heavy Duty		A600-Q600	-





LIFTING EQUIPMENT



**Safety contact block**

Code: PCW01FT

(Family line PCW: spring cage terminal – see page 17)

**An important step in accident prevention!**

Giovezana International B.V. has developed a new technology in the field of industrial and lift automation. The product is designed to maximize the performance of the NC mushroom e-stop contact which results in a risk factor of zero.

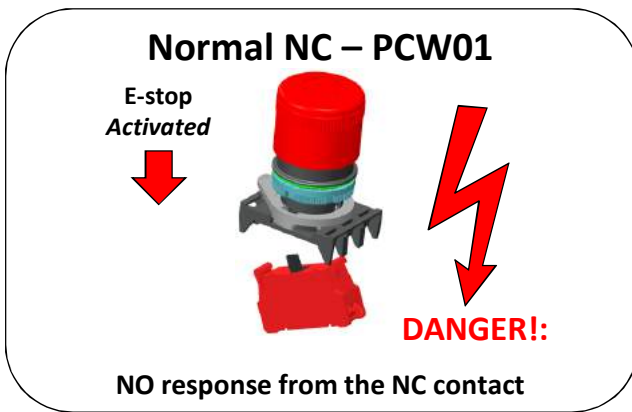
The NC contact will open in the event of accidental release of the contact block from the base.

In the unlikely event of mechanical failure or support breaking, the contact block is designed to intervene and open the circuit. This will block any further operation of the machine.

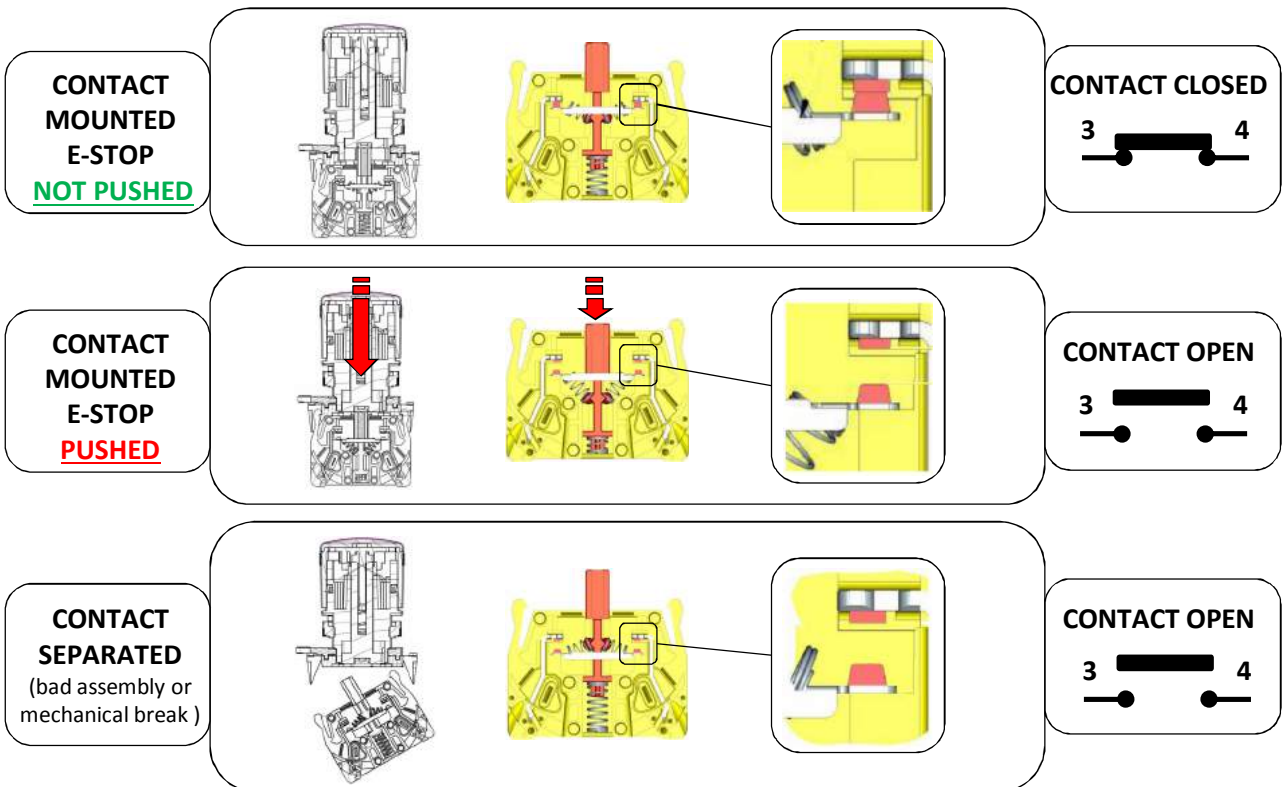
This is an important step ahead in accident prevention and emergency device intervention.

See following sequence with possible operating conditions.

***Detached contact due to a bad assembly or mechanical failure:  
difference between a normal NC Vs a Safety NC contact:***



**OPERATING SYSTEM**





**Stacking forbidden!**  
Do not fix the safety contact block under a contact block

**Three Contact Point**  
safe & durable energy transmission

**Dimensions**

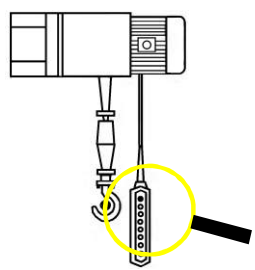
**Markings**

**Spring cage terminal:**

- 1) Insert the screwdriver
- 2) turn 1/4 the screwdriver
- 3) insert wire
- 4) remove the screwdriver

**Pendant Stations with PCW01FT - Characteristics:**

- Shock proof and heat resistant
- Bi-directional, mechanically interlocked
- IP 65 double insulation IEC/EN60529
- General and electrical data page 23
- Laser engraved symbols comply with EN60204-1, FEM 9.941



PICTURE	LAYOUT	CONFIGURATION	CODE	CONTACT TYPE	WEIGHT [gr]
<p><b>HP03</b></p>		<p>SINGLE SPEED</p>	<p><b>HP03.SS</b></p>	<p> </p> <p> </p>	<p>330</p>

NOTE: available in UL/CSA requirements