

# END SLEEVE BOOT LACE FERRULES

Designed to be crimped onto the end of flexible wires and cables before insertion into rail mounted or screw terminals, to provide protection to the fragile wire strands against bending back and breakage. Featuring a funnel entry, the fine electrolytic copper tubes are tin plated for superior conductivity and corrosion resistance. Pre-insulated ferrules are colour coded by size for easy product selection.

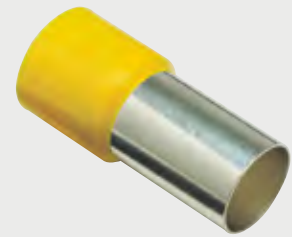
## Pre-Insulated End Sleeve (boot lace) Ferrules

CODE	PART NO.	WIRE SIZE mm <sup>2</sup>	COLOUR	LENGTH	PACK QTY
T	A00352	0.25/0.34	PINK	6	500
	A00382	0.25/0.34	PINK	8	500
	A00552	0.50	WHITE	8	500
	A00752	0.75	BLUE	8	500
	A01052	1	RED	8	500
	A01552	1.5	BLACK	8	500
	A01582	1.5	BLACK	10	500
	A02552	2.5	GREY	8	500
	A02582	2.5	GREY	18	500
	A04052	4	ORANGE	9	100
	A04082	4	ORANGE	12	100
	A06052	6	GREEN	12	100
	A06082	6	GREEN	18	100
	A10052	10	BROWN	12	100
	A10082	10	BROWN	18	100
	A16052	16	WHITE	12	100
	A16082	16	WHITE	18	100
	A25082	25	BLACK	18	50
	A25092	25	BLACK	22	50
	A35082	35	RED	16	20
A35092	35	RED	25	20	
A50082	50	BLUE	20	10	
A70082	70	YELLOW	20	10	
A95082	95	RED	25	10	

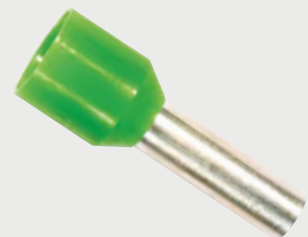
## Pre-Insulated End Sleeve (Boot Lace) Ferrules - Reel

Note: Three standards of colour coding exist. This colour coding standard offered by Carroll is the most widely recognised and accepted.

CODE	PART NO.	WIRE SIZE mm <sup>2</sup>	COLOUR	LENGTH	PACK QTY
T	AR0552	0.50	WHITE	8	1000
	AR0752	0.75	BLUE	8	1000
	AR1052	1	RED	8	1000
	AR1552	1.5	BLACK	8	1000
	AR2552	2.5	Grey	8	500



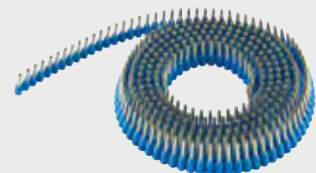
PRE-INSULATED  
END SLEEVE  
(BOOT LACE) FERRULES



PRE-INSULATED  
END SLEEVE  
(BOOT LACE) FERRULES



PRE-INSULATED  
END SLEEVE  
(BOOT LACE) FERRULES



PRE-INSULATED  
END SLEEVE  
FERRULES REEL

## Uninsulated End Sleeve (Boot Lace) Ferrules

Designed to be fitted onto the ends of flexible wires and cables prior to insertion into components, to provide protection to the wire strands. Specifically suited to applications where limited space prohibits the use of standard pre-insulated ferrules.



CODE	PART NO.	WIRE SIZE mm <sup>2</sup>	LENGTH mm	PACK QTY
T	AU00552	0.5	6	500
	AU00752	0.75	6	500
	AU01052	1	6	500
	AU01552	1.5	7	500
	AU01582	1.5	10	500
	AU02552	2.5	7	500
	AU02572	2.5	12	500
	AU04052	4	9	100
	AU04082	4	12	100
	AU06052	6	10	100
	AU06082	6	15	100
	AU06092	6	20	100
	AU10082	10	15	100
	AU10092	10	20	100
	AU16082	16	15	100
	AU16092	16	20	100
	AU25082	25	18	50
	AU35082	35	20	50
	AU50082	50	22	10
	AU70802	70	25	10
AU95082	95	25	10	



UNINSULATED  
END SLEEVE

## Pre-Insulated Twin End Sleeve (Boot Lace) Ferrules

Designed to be crimped onto the end of two wires. This facilitates daisy chaining and termination of two wires into the tight spaces experienced in today's electrical equipment.

CODE	PART NO.	WIRE SIZE mm <sup>2</sup>	COLOUR	LENGTH mm	PACK QTY
T	AT0752	2 x 0.75	GREY	8	100
	AT1052	2 x 1.0	RED	8	100
	AT1552	2 x 1.5	BLACK	8	100
	AT2552	2 x 2.5	BLUE	10	100
	AT4052	2 x 4.0	GREY	12	50
	AT6052	2 x 6.0	YELLOW	14	50



PRE-INSULATED  
TWIN END SLEEVE