

# CARROLL CABLE LUGS & LINKS

## Carroll Copper Lugs and Links

Manufactured from fully annealed, 99.95% pure high conductivity copper and are electro-tin plated for superior corrosion resistance. Carroll lugs also include crimp lines for improved accuracy during installation.

### Featuring:

- 99.95% pure electrolytic copper
- Electrical conductivity 99.7% IACS
- Oxygen content 30 ppm max
- Fully annealed
- 5-10 Micron, 99.9% pure tin plating
- Operating temperature range of -55 to 155°C
- Conformant standards: AS/NZS 4325 - Part 1.
- Lug sizes 10 to 630mm<sup>2</sup> are supplied bell mouth as standard
- All other sizes are straight barrel type
- Printed crimp line marks for added guidance
- Inspection window to assist with cable insertion

## Carroll Circuit Breaker / Narrow Palm Lugs

Palm widths of standard copper lugs are too wide to fit 150 - 250A circuit breakers. Carroll has a comprehensive range of circuit breaker lugs which also feature a convenient bell mouth to facilitate easy insertion of flexible cables. These lugs utilise standard barrel dimensions, normal crimping rules using standard tools and crimp dies apply.

## Carroll Long Palm-Long Barrel Lugs

Carroll Long Palm-Long Barrel Lugs are designed to accommodate two bolt mounting for secure termination. The longer barrel allows improved surface area for heatshrink sealing and multiple crimps if desired.

- Sizes 300mm<sup>2</sup> and above are supplied blank.
- Designed to be crimped with standard hexagonal dies and tooling.



**COPPER CABLE LUG**



**COPPER CRIMP LINK**



**CIRCUIT BREAKER**



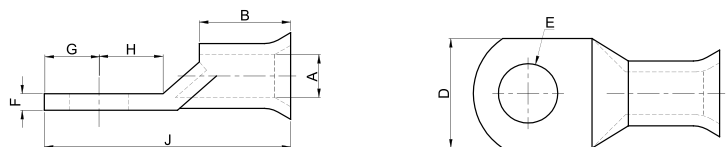
**LONG PALM LONG BARREL**

# Copper Cable Lugs

Carroll copper lugs and links are manufactured from fully annealed, 99.95% pure high conductivity copper and are electro-tin plated for superior corrosion resistance. Carroll lugs also include crimp lines for improved accuracy during installation.



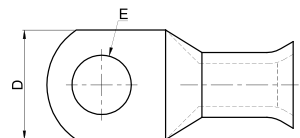
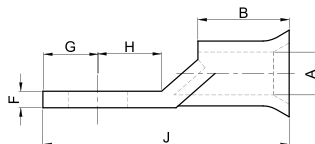
CODE	PART NO.	BARREL TYPE	WIRE SIZE mm <sup>2</sup>	DIMENSIONS mm								PACK QTY
				Ø STUD E	I.D. A	PALM WIDTH D	PALM THICKNESS F	BARREL LENGTH B	H	G	LENGTH J	
TA	CUL1.5-5	Straight	1.5	5	1.8	8	1	7	5	4	18	100
	CUL1.5-6	Straight	1.5	6	1.8	10	0.8	7	6	4	19	100
	CUL2.5-4	Straight	2.5	4	2.4	8	1	8	5	4	19	100
	CUL2.5-5	Straight	2.5	5	2.4	10	0.8	8	6	5	21	100
	CUL2.5-6	Straight	2.5	6	2.4	10	0.8	8	6	5	21	100
	CUL2.5-8	Straight	2.5	8	2.4	12	0.6	8	9	6	26	100
	CUL4-5	Straight	4.0	5	3.1	10	1	9	6	5	22	100
	CUL4-6	Straight	4.0	6	3.1	10	1	9	6	5	22	100
	CUL4-8	Straight	4.0	8	3.1	12	0.88	9	9	6	27	100
	CUL4-10	Straight	4.0	10	3.1	15	0.7	9	11	8	32	100
	CUL6-5	Straight	6.0	5	3.8	10	1.24	9	6	5	23	100
	CUL6-6	Straight	6.0	6	3.8	12	1	9	9	6	27	100
	CUL6-8	Straight	6.0	8	3.8	12	1	10	9	6	28	100
	CUL6-10	Straight	6.0	10	3.8	15	1	10	11	8	32	100
	CUL10-5	Bell Mouth	10.0	5	4.7	12	1.8	10	7	6	27	100
	CUL10-6	Bell Mouth	10.0	6	4.7	12	1.8	10	7	6	27	100
	CUL10-8	Bell Mouth	10.0	8	4.7	14	1.6	10	8	7	29	100
	CUL10-10	Bell Mouth	10.0	10	4.7	15	1.5	10	10	8	32	100
	CUL10-12	Bell Mouth	10.0	12	4.7	18	1	11	13	10	38	100
	CUL16-6	Bell Mouth	16.0	6	5.5	11	2.4	19	9	7	39	50
	CUL16-8	Bell Mouth	16.0	8	5.5	14	1.7	19	9	7	39	50
	CUL16-10	Bell Mouth	16.0	10	5.5	16	1.5	19	10	8	41	50
	CUL16-12	Bell Mouth	16.0	12	5.5	18	1.4	19	13	10	46	50
	CUL25-6	Bell Mouth	25.0	6	7.1	13.5	2.4	21	9	7	41	50
	CUL25-8	Bell Mouth	25.0	8	7.1	13.5	2.4	21	9	7	41	50
	CUL25-10	Bell Mouth	25.0	10	7.1	16	1.96	21	10	9	44	50
	CUL25-12	Bell Mouth	25.0	12	7.1	18	1.74	21	13	10	48	50
	CUL35-6	Bell Mouth	35.0	6	8.4	16	3	21	10	9	45	50
	CUL35-8	Bell Mouth	35.0	8	8.4	16	3	21	10	9	45	50
	CUL35-10	Bell Mouth	35.0	10	8.4	18	2.6	21	10	9	45	50
	CUL35-12	Bell Mouth	35.0	12	8.4	20	2.42	22	13	11	51	50
	CUL50-6	Bell Mouth	50.0	6	9.5	18	3.2	22	10	8	46	50
CUL50-8	Bell Mouth	50.0	8	9.5	18	3.2	22	10	8	46	50	
CUL50-10	Bell Mouth	50.0	10	9.5	18	3.2	22	10	8	46	50	



## Copper Cable Lugs - continued

CODE	PART NO.	BARREL TYPE	WIRE SIZE mm <sup>2</sup>	DIMENSIONS mm								PACK QTY
				Ø STUD E	I.D. A	PALM WIDTH D	PALM THICKNESS F	BARREL LENGTH B	H	G	LENGTH J	
TA	CUL50-12	Bell Mouth	50.0	12	9.5	21	2.7	22	13	11	54	50
	CUL70-6	Bell Mouth	70.0	6	11.3	21	3.2	24	13	11	54	25
	CUL70-8	Bell Mouth	70.0	8	11.3	21	3.2	24	13	11	54	25
	CUL70-10	Bell Mouth	70.0	10	11.3	21	3.2	24	13	11	54	25
	CUL70-12	Bell Mouth	70.0	12	11.3	21	3.2	24	13	11	54	25
	CUL70-16	Bell Mouth	70.0	16	11.3	26	3.2	24	14	13	61	25
	CUL95-6	Bell Mouth	95.0	6	13.5	25	3.8	27	14	12	60	25
	CUL95-8	Bell Mouth	95.0	8	13.5	25	3.8	27	14	12	60	25
	CUL95-10	Bell Mouth	95.0	10	13.5	25	3.8	27	14	12	60	25
	CUL95-12	Bell Mouth	95.0	12	13.5	25	3.8	27	14	12	60	25
	CUL95-16	Bell Mouth	95.0	16	13.5	25	3.8	27	16	14	64	25
	CUL120-8	Bell Mouth	120.0	8	15.6	30	4.7	30	14	12	64	25
	CUL120-10	Bell Mouth	120.0	10	15.6	30	4.7	30	14	12	64	25
	CUL120-12	Bell Mouth	120.0	12	15.6	30	4.7	30	14	12	64	25
	CUL120-16	Bell Mouth	120.0	16	15.6	30	4.7	30	16	16	72	25
	CUL150-10	Bell Mouth	150.0	10	16.7	32	5.25	30	16	16	71	20
	CUL150-12	Bell Mouth	150.0	12	16.7	32	5.25	30	18	18	75	20
	CUL150-16	Bell Mouth	150.0	16	16.7	32	5.25	30	18	18	75	20
	CUL185-10	Bell Mouth	185.0	10	18.4	36	5.39	32	16	16	74	20
	CUL185-12	Bell Mouth	185.0	12	18.4	36	5.39	32	18	18	79	20
	CUL185-16	Bell Mouth	185.0	16	18.4	36	5.39	32	18	18	79	20
	CUL240-0	Bell Mouth	240.0	0	21.2	41	7	38	21	21	92	1
	CUL240-10	Bell Mouth	240.0	10	21.2	41	7	38	21	21	92	1
	CUL240-12	Bell Mouth	240.0	12	21.2	41	7	38	21	21	92	1
	CUL240-16	Bell Mouth	240.0	16	21.2	41	7	38	21	21	92	1
	CUL300-0	Bell Mouth	300.0	0	23.8	46	7.7	42	23	23	101	1
	CUL300-12	Bell Mouth	300.0	12	23.8	46	7.7	42	23	23	101	1
	CUL300-16	Bell Mouth	300.0	16	23.8	46	7.7	42	23	23	101	1
	CUL400-0	Bell Mouth	400.0	0	26.8	50	7.9	44	24	24	114	1
	CUL400-12	Bell Mouth	400.0	12	26.8	50	7.9	44	24	24	114	1
	CUL400-16	Bell Mouth	400.0	16	26.8	50	7.9	44	24	24	114	1
	CUL500-0	Bell Mouth	500.0	0	30	56	7.6	50	27	27	119	1
	CUL500-12	Bell Mouth	500.0	12	30	56	7.6	50	27	27	119	1
CUL500-16	Bell Mouth	500.0	16	30	56	7.6	50	27	27	119	1	
CUL630-0	Bell Mouth	630.0	0	34	64.4	9.5	58	32	32	139	1	
CUL630-12	Bell Mouth	630.0	12	34	64.4	9.5	58	32	32	139	1	
CUL630-16	Bell Mouth	630.0	16	34	64.4	9.5	58	32	32	139	1	
CUL800-0 *	Straight	800.0	0	39.3	74	14.0	125	62.5	62.5	275	1	
CUL1000-0 *	Straight	1000.0	0	44.0	84.6	16.0	130	62.5	62.5	295	1	

\*Lead times may apply.



## Carroll 90° Angled Copper Lugs

The extended range of copper lugs to Carroll have a pre-formed 90 degree angled palm. Some features are:

- Fully annealed 99.95% pure electrolytic copper
- Designed for cable sizes 50mm<sup>2</sup>, 70mm<sup>2</sup> or 95mm<sup>2</sup>
- Stocked in 8mm, 10mm or 12mm stud holes sizes
- Inspection window facilitates full insertion of the cable

CODE	PART NO.	DESCRIPTION	PACK QTY
TA	CUL50-8/90	COPPER LUG 50MM <sup>2</sup> 8MM STUD 90° ANGLE	50
	CUL50-10/90	COPPER LUG 50MM <sup>2</sup> 10MM STUD 90° ANGLE	50
	CUL50-12/90	COPPER LUG 50MM <sup>2</sup> 12MM STUD 90° ANGLE	50
	CUL70-8/90	COPPER LUG 70MM <sup>2</sup> 8MM STUD 90° ANGLE	25
	CUL70-10/90	COPPER LUG 70MM <sup>2</sup> 10MM STUD 90° ANGLE	25
	CUL70-12/90	COPPER LUG 70MM <sup>2</sup> 12MM STUD 90° ANGLE	25
	CUL95-8/90	COPPER LUG 95MM <sup>2</sup> 8MM STUD 90° ANGLE	25
	CUL95-10/90	COPPER LUG 95MM <sup>2</sup> 10MM STUD 90° ANGLE	25
	CUL95-12/90	COPPER LUG 95MM <sup>2</sup> 12MM STUD 90° ANGLE	25

Carroll Australasia Pty Ltd reserves the right to change product specifications without prior written notice.

## Copper Crimp Links

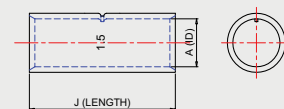
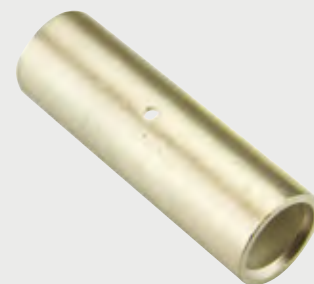
CODE	PART NO.	WIRE SIZE mm <sup>2</sup>	A	J	PACK QTY
TA	CUI1.5	1.5	1.8	22	100
	CUI2.5	2.5	2	22	100
	CUI4	4	3.3	22	100
	CUI6	6	3.8	22	100
	CUI10	10	4.7	22	50
	CUI16	16	5.5	44	50
	CUI25	25	7.1	47	50
	CUI35	35	8.4	47	50
	CUI50	50	9.5	47	50
	CUI70	70	11.3	50	25
	CUI95	95	13.5	54	25
	CUI120	120	15.6	65	25
	CUI150	150	16.7	65	20
	CUI185	185	18.4	65	20
	CUI240	240	21.2	90	1
	CUI300	300	23.8	90	1
	CUI400	400	26.8	90	1
	CUI500	500	30	112	1
	CUI630	630	34	112	1



90° ANGLED  
COPPER LUGS



90° ANGLED  
COPPER LUGS

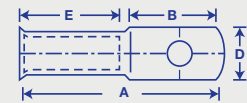


COPPER CRIMP LINKS

## Circuit Breaker / Narrow Palm Lugs

Palm widths of standard copper lugs are too wide to fit 150 - 250A circuit breakers. Carroll has a comprehensive range of circuit breaker lugs which also feature a convenient bell mouth to facilitate easy insertion of flexible cables. These lugs utilise standard barrel dimensions, normal crimping rules using standard tools and crimp dies apply.

CODE	PART NO.	WIRE SIZE mm <sup>2</sup>	DIMENSIONS mm						PACK QTY
			STUD SIZE	A	B	C	D (P-WTH)	E	
TA	SCB35-6	35	6	41	15	3.0	15.0	21	25
	SCB50-6	50	6	43	15	3.2	15.0	22	10
	SCB50-10	50	10	49	21	3.2	19.0	22	10
	SCB70-6	70	6	45	15	3.3	17.0	24	10
	SCB70-10	70	10	51	21	3.3	19.0	24	10
	SCB95-8	95	8	51	17	3.9	19.0	27	1
	SCB95-10	95	10	55	21	3.9	19.0	27	1
	SCB120-8	120	8	61	23	5.0	19.0	30	1
	SCB120-10	120	10	61	23	5.0	19.0	30	1
	SCB150-8	150	8	66	27	5.5	19.0	30	1
	SCB150-10	150	10	66	27	5.5	19.0	30	1
	SCB185-10	185	10	74	32	5.7	24.5	32	1
	SCB240-10	240	10	82	32	7.1	31.0	38	1
	SCB240-12	240	12	82	32	7.1	31.0	38	1
	SCB300-10	300	10	87	32	7.8	31.0	42	1
SCB300-12	300	12	87	32	7.8	31.0	42	1	



**CIRCUIT BREAKER  
NARROW PALM LUGS**



CARROLL'S EXTENSIVE RANGE OF LUGS.  
**THE SOLUTION FOR  
YOUR NEXT PROJECT.**