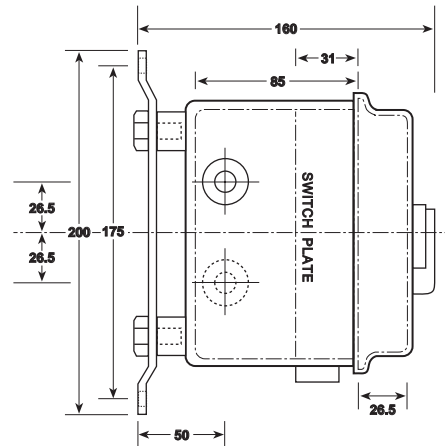
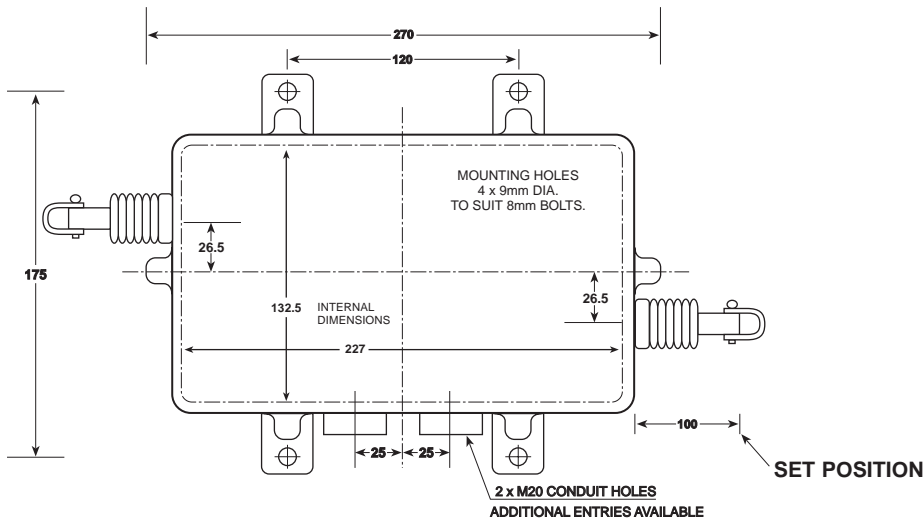
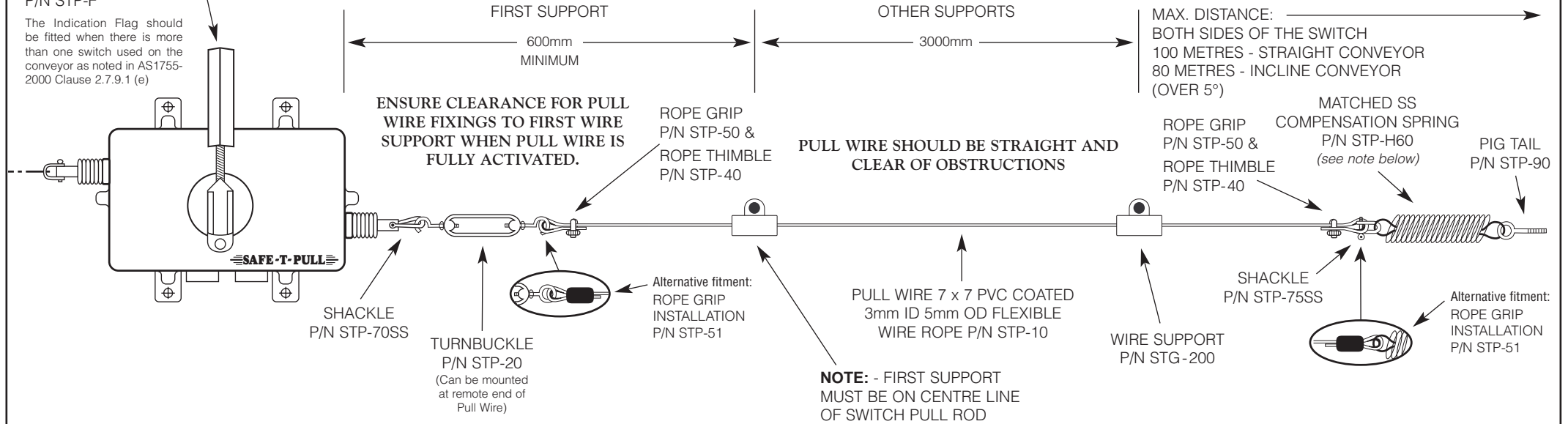


SAFE-T-PULL

P/N STP – MC, MB, IDIP & NR INSTALLATION & SETTING INSTRUCTIONS

YELLOW INDICATION FLAG: P/N STP-F

The Indication Flag should be fitted when there is more than one switch used on the conveyor as noted in AS1755-2000 Clause 2.7.9.1 (e)



For further requirements refer to AS 4024-1-1996 "Safeguarding of Machinery" Part 1: General principals and AS 1755-2000 "Conveyors Design, Construction, Installation and Operation, Safety requirements," respectively for conveyors used in Australia.

NOTE: TO COMPLY WITH AS 1755-2000 Clause 2.7.9

A matched compensation spring must be fitted to the remote end of the Pull Wire to allow tripping in both directions.

AS 1755-2000 is the Australian Standards for Conveyor – Safety Requirements.

SWITCH CANNOT BE RESET UNTIL BOTH PULL WIRES ARE CORRECTLY TENSIONED TO THE SET POSITION

ie. 100mm from pull rod end to switch body.

Electric Control
PRODUCTS

ACN: 060 617 987

CE Conformity